

RESEARCH ARTICLE

Inequalities in Alcohol-Related Mortality in 17 European Countries: A Retrospective Analysis of Mortality Registers

Johan P. Mackenbach^{1*}, Ivana Kulhánová¹, Matthias Bopp², Carme Borrell³, Patrick Deboosere⁴, Katalin Kovács⁵, Caspar W. N. Looman¹, Mall Leinsalu^{6,7}, Pia Mäkelä⁸, Pekka Martikainen⁹, Gwenn Menvielle¹⁰, Maica Rodríguez-Sanz³, Jitka Rychtaříková¹¹, Rianne de Gelder¹

1 Department of Public Health, Erasmus University Medical Center, Rotterdam, The Netherlands, **2** Epidemiology, Biostatistics and Prevention Institute, University of Zurich, Zurich, Switzerland, **3** Agència de Salut Pública de Barcelona, Barcelona, Spain, **4** Department of Sociology, Vrije Universiteit Brussel, Brussels, Belgium, **5** Demographic Research Institute, Hungarian Central Statistical Office, Budapest, Hungary, **6** Stockholm Centre for Health and Social Change, Södertörn University, Huddinge, Sweden, **7** Department of Epidemiology and Biostatistics, National Institute for Health Development, Tallinn, Estonia, **8** National Institute for Health and Welfare, Helsinki, Finland, **9** Department of Sociology, University of Helsinki, Helsinki, Finland, **10** Sorbonne Universités, Université Pierre et Marie Curie (Paris 6), INSERM, Institut Pierre Louis d'Epidémiologie et de Santé Publique (UMRS 1136), Paris, France, **11** Department of Demography, Charles University, Prague, Czech Republic

* j.mackenbach@erasmusmc.nl



click for updates

 OPEN ACCESS

Citation: Mackenbach JP, Kulhánová I, Bopp M, Borrell C, Deboosere P, Kovács K, et al. (2015) Inequalities in Alcohol-Related Mortality in 17 European Countries: A Retrospective Analysis of Mortality Registers. *PLoS Med* 12(12): e1001909. doi:10.1371/journal.pmed.1001909

Academic Editor: Jurgen Rehm, University of Toronto, CANADA

Received: April 16, 2015

Accepted: October 20, 2015

Published: December 1, 2015

Copyright: © 2015 Mackenbach et al. This is an open access article distributed under the terms of the [Creative Commons Attribution License](http://creativecommons.org/licenses/by/4.0/), which permits unrestricted use, distribution, and reproduction in any medium, provided the original author and source are credited.

Data Availability Statement: Data are available from the institutional repository of Erasmus MC. URL: <http://hdl.handle.net/1765/78744>. Data contact: Prof. Dr Agnes van der Heide ([a.vanderheide@erasmusmc.nl](mailto:vanderheide@erasmusmc.nl)).

Funding: This research was supported by a grant to JPM (FP7-CP-FP grant no. 278511) from the European Commission Research and Innovation Directorate General, as part of the “Developing methodologies to reduce inequalities in the determinants of health” (DEMETRIQ) project. The funders had no role in study design, data collection

Abstract

Background

Socioeconomic inequalities in alcohol-related mortality have been documented in several European countries, but it is unknown whether the magnitude of these inequalities differs between countries and whether these inequalities increase or decrease over time.

Methods and Findings

We collected and harmonized data on mortality from four alcohol-related causes (alcoholic psychosis, dependence, and abuse; alcoholic cardiomyopathy; alcoholic liver cirrhosis; and accidental poisoning by alcohol) by age, sex, education level, and occupational class in 20 European populations from 17 different countries, both for a recent period and for previous points in time, using data from mortality registers. Mortality was age-standardized using the European Standard Population, and measures for both relative and absolute inequality between low and high socioeconomic groups (as measured by educational level and occupational class) were calculated.

Rates of alcohol-related mortality are higher in lower educational and occupational groups in all countries. Both relative and absolute inequalities are largest in Eastern Europe, and Finland and Denmark also have very large absolute inequalities in alcohol-related mortality. For example, for educational inequality among Finnish men, the relative index of inequality is 3.6 (95% CI 3.3–4.0) and the slope index of inequality is 112.5 (95% CI 106.2–118.8) deaths per 100,000 person-years. Over time, the relative inequality in alcohol-related

and analysis, decision to publish, or preparation of the manuscript.

Competing Interests: The authors have declared that no competing interests exist.

Abbreviations: RII, relative index of inequality; SII, slope index of inequality.

mortality has increased in many countries, but the main change is a strong rise of absolute inequality in several countries in Eastern Europe (Hungary, Lithuania, Estonia) and Northern Europe (Finland, Denmark) because of a rapid rise in alcohol-related mortality in lower socioeconomic groups. In some of these countries, alcohol-related causes now account for 10% or more of the socioeconomic inequality in total mortality.

Because our study relies on routinely collected underlying causes of death, it is likely that our results underestimate the true extent of the problem.

Conclusions

Alcohol-related conditions play an important role in generating inequalities in total mortality in many European countries. Countering increases in alcohol-related mortality in lower socioeconomic groups is essential for reducing inequalities in mortality. Studies of why such increases have not occurred in countries like France, Switzerland, Spain, and Italy can help in developing evidence-based policies in other European countries.

Introduction

Alcohol consumption, particularly in higher doses, is a risk factor for many fatal and nonfatal health problems. Acute intoxication is a risk factor for injuries, both accidental and non-accidental, and for cardiovascular disease, whereas chronic heavy drinking is a risk factor for liver cirrhosis, various forms of cancer, and cardiovascular disease [1,2].

Liver cirrhosis mortality is high in Europe, particularly in Central and Eastern European countries [3]. Mortality from liver cirrhosis used to be high in Southern Europe, too, but since the 1970s and 1980s it has declined substantially in France, Italy, Spain, Greece, and other Mediterranean countries. By contrast, mortality from liver cirrhosis has increased in Central and Eastern Europe, in Finland, and in the United Kingdom [3–6].

Patterns and trends of mortality from other alcohol-related conditions have been studied less often. Within Europe, mortality from alcoholic psychosis, alcohol poisoning, and alcohol dependence appears to have a geographical pattern different from that of mortality from liver cirrhosis, with relatively high rates of the former in the Nordic countries [7,8]. This has been attributed to the culture of binge drinking, characterized by non-daily drinking and frequent intoxication, in Northern Europe, which is also common in Eastern Europe [9]. Mortality from these conditions has been rising in many European countries [8].

Like many other health-related behaviors, alcohol consumption is strongly patterned by socioeconomic status, as indicated by level of education, occupational class, and income. In many European countries, the frequency of drinking and sometimes also the levels of consumption are higher in higher socioeconomic groups, whereas problematic forms of consumption, like binge drinking, and alcohol-related health and social problems, are more frequent in lower socioeconomic groups [7,10].

Recent literature reviews have shown that mortality from alcohol-related conditions is higher in lower socioeconomic groups in most of the available studies [11,12], including studies from Finland [13], Sweden [14,15], the United Kingdom [16,17], and Estonia [18]. Comparative studies are, however, lacking, and it is therefore unknown whether there are important differences between countries in the magnitude of socioeconomic inequalities in alcohol-related mortality. Investigating whether there are differences is important because such differences might provide useful insights into the explanation of these inequalities, and into the potential for reducing them.

Studies of trends in inequalities in alcohol-related mortality are even scarcer. Finland is the only country in which detailed studies have been conducted. Over the past decades, the absolute inequality in alcohol-related mortality has strongly increased in Finland [19], which has contributed importantly to a rising inequality in total mortality and life expectancy [20,21]. These changes have been partly fueled by changes in the affordability of alcohol [22,23]. In Finland, the rise of inequality in alcohol-related mortality has partly undone the effect of declining inequality in smoking-related mortality, suggesting that one risk factor has been replaced by another [21]. Studies from other countries are very scarce [18,24], and it is therefore unknown whether the Finnish experience can be generalized to other countries.

To fill these gaps, we set out to study whether European countries differ in the magnitude of socioeconomic inequality in alcohol-related mortality, and what the trends of this inequality over the past decades have been. More specifically, we studied inequality in alcohol-related mortality by education level and occupational class in all European countries with available data, and assessed whether its magnitude and contribution to inequality in total mortality vary between countries and have changed over time.

Methods

Data

We extracted data from national or regional mortality registers in which deaths and population numbers were classified by socioeconomic position, such as the national longitudinal mortality registers in Finland, Sweden, Norway, and Denmark; the Office for National Statistics Longitudinal Mortality Study in England and Wales, and the Echantillon Démographique Permanent created by the National Institute of Statistics and Economic Studies (INSEE) in France. We included all European countries for which data on cause-specific mortality covering complete national or regional populations were available that allowed a distinction by the most commonly used indicator of socioeconomic position, level of education (see below). Unfortunately, not all European countries have data collection systems in place from which such data could be extracted (e.g., because of privacy restrictions or lack of information on education level in their population census), but our study includes 17 countries that together represent all parts of the European subcontinent. [Table 1](#) gives an overview of the main characteristics of our data sources; [S1–S3](#) Tables provide additional detail. To facilitate inspection of tables and graphs, we have grouped populations into four geographical regions (Northern Europe, Western Europe, Southern Europe, and Eastern Europe).

Most data stemmed from longitudinal mortality follow-up after censuses in which socioeconomic information of the population at risk and of the deceased had been recorded; some countries had only unlinked cross-sectional data in which socioeconomic information on the population at risk came from the census, and socioeconomic information on the deceased came from the death certificate. In most countries linkage between the population and death registries was more than 95% complete; for Spain, where linkage failure exceeded 5%, mortality rates were multiplied by the inverse of the proportion of deaths that were successfully linked in order to adjust for the linkage failure. Data for Spain and Italy came from regional populations, but previous studies have shown that patterns observed in these regional populations correspond well to those seen at the national level [25–27]. The UK is represented by two regional populations: (1) England and Wales and (2) Scotland.

We used two indicators of socioeconomic position: level of education and occupational class. For education level, we used the International Standard Classification of Education 1997, and considered categories 0–2 (pre-primary, primary, and lower secondary education) as “low,” categories 3–4 (upper secondary and post-secondary non-tertiary education) as

Table 1. Overview of data sources.

| Geographical Region | Population | Design ¹ | Years Covered by the Analysis ² | | | | | |
|---------------------|------------------------|--|--|-----------|-----------|-----------|-----------|-----------|
| | | | 1980–1984 | 1985–1989 | 1990–1994 | 1995–1999 | 2000–2004 | 2005–2009 |
| Northern Europe | Finland | Longitudinal | 1980–1985 | 1986–1990 | 1991–1995 | 1996–2000 | 2001–2005 | 2006–2010 |
| | Sweden | Longitudinal | | | 1990–1994 | 1995–1999 | 2000–2004 | 2005–2008 |
| | Norway | Longitudinal | 1980–1985 | 1985–1990 | 1990–1995 | 1995–2001 | 2001–2006 | 2006–2009 |
| | Denmark | Longitudinal | | | 1991–1995 | 1996–2000 | 2001–2005 | |
| Western Europe | Scotland (UK) | Longitudinal | | | 1991–1995 | 1996–2000 | 2001–2005 | 2006–2010 |
| | England and Wales (UK) | Longitudinal | 1981–1986 | 1986–1991 | 1991–1996 | 1996–2001 | 2001–2006 | 2006–2009 |
| | Belgium | Longitudinal | | | | | 2004–2005 | |
| | France | Longitudinal | 1980–1985 | 1985–1990 | 1990–1995 | 1995–1999 | 1999–2004 | 2004–2007 |
| | Switzerland | Longitudinal | | | 1990–1995 | 1995–2000 | 2000–2005 | 2005–2008 |
| | Austria | Longitudinal | 1981–1982 | | 1991–1992 | | 2001–2002 | |
| | Barcelona (Spain) | Cross-sectional | | | 1992–1996 | 1997–2001 | 2002–2006 | 2007–2010 |
| Southern Europe | Basque Country (Spain) | Longitudinal | | | | 1996–2001 | 2001–2006 | |
| | Madrid (Spain) | Longitudinal | | | | 1996–1997 | 2001–2003 | |
| | Turin (Italy) | Longitudinal | 1981–1986 | 1986–1991 | 1991–1996 | 1996–2001 | 2001–2006 | 2006–2010 |
| | Slovenia | Longitudinal | | | 1991–1996 | | 2002–2006 | |
| | Hungary | Cross-sectional | 1978–1981 | | 1988–1991 | | 1999–2002 | |
| Eastern Europe | Czech Republic | Cross-sectional | | | | | 1998–2003 | |
| | Poland | Cross-sectional | | | | | 2001–2003 | |
| | Lithuania | Cross-sectional, longitudinal ³ | | 1988–1990 | | | 2001–2005 | 2006–2009 |
| | Estonia | Cross-sectional | | 1987–1991 | | | 1998–2002 | |

All data cover complete national or regional populations with the exceptions of Scotland (5.3% representative sample), England and Wales (1% representative sample), France (1% sample of individuals born in and living in mainland France), and Switzerland (Swiss nationals only). Age range is 35–79 y in all populations, with the exceptions of Norway (40–79 y), Poland (35–64 y), and Lithuania (35–69 y).

¹Longitudinal design: population census linked to mortality during a follow-up period. Cross-sectional design: education level of deceased individuals from death certificates; person-years by education from population census.

²For each population, the periods covered by the data are given; because mortality follow-up periods often started and ended within a calendar year, the years given are approximate only. For the analysis, these periods have been allocated to the harmonized intervals given at the top of the columns.

³Lithuania had a cross-sectional design in 1988–1990 and 2000–2002 and a longitudinal design in 2001–2005 and 2006–2009. To remove design effects, longitudinal data were used for 2001–2005, and 1988–1990 data were adjusted using the differences between the two designs seen in 2000–2002 and 2001–2005.

doi:10.1371/journal.pmed.1001909.t001

“middle,” and categories 5–6 (first and second stage of tertiary education) as “high” [28]. For occupational class, we used the Erikson-Goldthorpe-Portocarero scheme of occupational classes, and distinguished non-manual workers, manual workers, farmers, and self-employed workers [29]. Farmers and self-employed workers are heterogeneous groups in terms of their socioeconomic position (e.g., because some farmers and self-employed workers have employees working for them while others lead a precarious existence), which is also reflected in highly variable mortality rates in different European countries [30]. Therefore, we report on differences in mortality between manual and non-manual workers only. Because occupational class

was not available for all populations, and information on occupational class is less reliable among women, we present results on mortality by occupational class (men only) in [S5–S7 Tables](#) rather than in the main analysis. Persons with missing education level or occupational class were excluded from the analysis. The proportion of the population aged 35–79 y with unknown education level varied between 0% and 11%; the percentage of the male population aged 35–64 y with unknown occupational class varied between 3% and 36% ([S1–S3 Tables](#)).

For our outcome variable, mortality due to alcohol-related causes, we selected four underlying causes of death: alcoholic psychosis, dependence, and abuse; alcoholic cardiomyopathy; alcoholic liver cirrhosis; and accidental poisoning by alcohol. In the most recent time period, most countries used ICD-10 (International Classification of Diseases–Tenth Revision) for classifying causes of death. ICD codes for alcohol-related conditions in ICD-10 and previous editions are given in [S4 Table](#). All countries were able to provide data on all four alcohol-related causes in the most recent time period, but some were not able to for earlier periods in time.

Analysis

Our analysis consisted of two parts: (1) a cross-population comparison of inequality in alcohol-related mortality for the most recent time period for which data were available in these populations and (2) a cross-population comparison of trends in the inequality in alcohol-related mortality over time. Mortality rates by education level and occupational class were age-standardized using the European Standard Population [[31](#)]. Because education level gradually loses its discriminatory power at higher ages, and because registration of causes of death becomes increasingly unreliable at higher ages, all analyses for education level are restricted to the age-range 35–79 y (for exceptions, see [Table 1](#)). Because registration of (former) occupation was incomplete for retired individuals, analyses for occupational class were restricted to the age range 35–64 y. All analyses were stratified by sex, because alcohol consumption patterns and inequality in these patterns are known to differ between men and women [[32](#)].

We systematically studied the magnitude of both relative and absolute inequalities because both are important [[33,34](#)], and we operationalized inequalities in terms of both a ratio and a difference measure of the excess mortality in lower as compared to higher socioeconomic groups. All measures were adjusted for age. For education level, we used the relative index of inequality (RII) and the slope index of inequality (SII) [[35,36](#)]. Both measures take into account all education groups (i.e., not just the lowest and highest groups) and derive from a linear regression analysis of mortality on education level. The RII was calculated using Poisson regression with the observed number of deaths as the dependent variable, person-years of population as the offset variable, and educational rank and dummy variables for age (in 5-y age groups) as independent variables. Educational rank was calculated for each education level (by population, sex, and time period) as the mean proportion of the population having a higher level of education. The RII is the ratio between mortality at rank 1 (the lowest education level) and rank 0 (the highest education level), and can thus be interpreted as the rate ratio of mortality between those with the very lowest and those with the very highest educational position in the population [[35](#)]. The SII represents the absolute version of the RII and was calculated as follows:

$$SII = \frac{2 \times ASMR \times (RII - 1)}{(RII + 1)} \quad (1)$$

in which ASMR is the age-standardized mortality in the whole population [[37](#)]. The SII can be interpreted as the rate difference (in deaths per 100,000 person-years) between those with the very lowest and those with the very highest educational position in the population. The RII and

SII take into account the size of education groups, and adjust the relative position of each group to its share in the population, which increases comparability over time and between populations if there are substantial differences in the distribution of the population across education groups [35]. The 95% CIs for RII and SII values were calculated using bootstrapping of 1,000 replicas [38]. The percent contribution of inequality in alcohol-related mortality to inequality in total mortality was calculated from the SIIs for alcohol-related mortality (numerator) and total mortality (denominator). As our comparison for occupational class involved only two classes (manual workers and non-manual workers), we used simple rate ratios and rate differences, with the non-manual worker class as the reference group for this socioeconomic indicator.

Results

Inequality in Alcohol-Related Mortality in the Most Recent Time Period

Levels of mortality from alcohol-related causes among men and women in the latest available time period are presented in Tables 2 and 3, respectively. Mortality from all alcohol-related causes together was highest in Hungary, both among men and women, with age-standardized mortality rates of 198.1 (95% CI 195.1–200.9) and 51.4 (95% CI 50.0–52.7) deaths per 100,000 person-years, respectively, mainly due to extremely high mortality from alcoholic liver cirrhosis. Alcoholic psychosis, dependence, and abuse mortality was highest in Denmark, and alcohol poisoning mortality was highest in Estonia.

Educational inequality in mortality from alcohol-related causes was found in all populations, with mortality being higher among individuals in the middle education group than in the high education group, and among individuals in the low education group than in the middle education group, almost without exception (Figs 1 and 2). However, it can immediately be seen that the absolute gap in death rates between the low and the high education groups varied substantially between populations, being very small in the four populations in Southern Europe and very large in most countries in Eastern Europe. The gap in death rates between the low and high education groups was also relatively large in Finland and Denmark. Remarkably, alcohol-related mortality among individuals with a high level of education was also highly variable between populations.

Table 4 shows relative and absolute educational inequalities in mortality from alcohol-related causes in the most recent observed period. The RII almost always exceeded 1.00, indicating higher mortality among lower educated individuals. For example, among Finnish men the RII was 3.6 (95% CI 3.3–4.0) and the SII was 112.5 (95% CI 106.2–118.8) deaths per 100,000 person-years. As can be seen in Figs 1 and 2, the absolute inequality as measured by the SII was largest in Hungary, both among men and among women, with the two Baltic countries coming second and third. The absolute inequality in alcohol-related mortality was also very large in Slovenia, Finland, and Denmark.

Table 4 also shows the contribution of alcohol-related mortality to inequalities in total mortality. That contribution was equal to or higher than 10% in Finland, Denmark (men only), Slovenia, and Hungary. Data on occupational class inequalities in alcohol-related mortality among men were available for 11 out of 17 countries, and show a pattern of consistently higher mortality among manual than non-manual workers. The contribution of alcohol-related mortality to occupational class inequalities in total mortality was often even larger than that seen for educational inequalities in total mortality, due to the restriction to a younger age group (S5 Table).

Trends in Inequality in Alcohol-Related Mortality

Trends in inequality in alcohol-related mortality over time are illustrated in Tables 5–8. Relative inequality in alcohol-related mortality, as measured by the RII, has gone up in some

Table 2. Latest observed mortality from alcohol-related causes among men aged 35–79 y, by population.

| Geographical Region | Population (Time Period) | Age-Standardized Mortality Rate (95% CI) | | | | | Alcohol Poisoning | Total Alcohol-Related Causes | Total Alcohol-Related Deaths as Percent of Total Mortality |
|---|-------------------------------|--|---------------------------|--|-------------------|------------------------------|-------------------|------------------------------|--|
| | | Alcoholic Cardiomyopathy | Alcoholic Liver Cirrhosis | Alcoholic Psychosis, Dependence, and Abuse | Alcohol Poisoning | Total Alcohol-Related Causes | | | |
| Northern Europe | Finland (2006–2010) | 7.3 (6.7–7.9) | 55.8 (54.0–57.5) | 8.8 (8.1–9.5) | 27.5 (26.2–28.8) | 99.3 (96.9–101.6) | 9.8% | | |
| | Sweden (2005–2008) | 1.2 (1.0–1.4) | 10.7 (10.1–11.4) | 9.4 (8.8–10.0) | 3.6 (3.3–4.0) | 24.9 (23.9–25.9) | 3.2% | | |
| | Norway (2006–2009) | — | 9.7 (8.5–10.9) | — | — | 25.7 (23.7–27.8) | 2.7% | | |
| | Denmark (2001–2005) | — | 37.6 (36.3–39.0) | 35.1 (33.8–36.7) | 0.6 (0.4–0.8) | 74.5 (72.5–76.6) | 6.5% | | |
| Western Europe | Scotland (2006–2010) | — | — | — | — | 44.4 (37.5–51.8) | 4.5% | | |
| | England and Wales (2006–2009) | 0.7 (0.0–1.6) | 15.2 (11.8–18.5) | 1.9 (0.8–3.3) | 1.1 (0.2–2.3) | 18.9 (15.1–23.0) | 2.3% | | |
| | Belgium (2004–2005) | — | 19.5 (18.3–20.5) | 7.4 (6.7–8.1) | — | 28.0 (26.6–29.4) | 2.5% | | |
| | France (2003–2007) | — | — | — | — | 39.1 (33.5–44.8) | 4.2% | | |
| | Switzerland (2005–2008) | 1.0 (0.7–1.3) | 16.8 (15.6–18.0) | 6.6 (5.8–7.4) | 0.4 (0.2–0.6) | 24.8 (23.3–26.3) | 3.3% | | |
| | Austria (2001–2002) | 0.6 (0.3–0.9) | 9.5 (8.2–10.9) | 11.8 (10.3–13.2) | 0.0 (0.0–0.2) | 21.9 (19.8–24.0) | 2.1% | | |
| Southern Europe | Barcelona (2007–2010) | 0.4 (0.1–0.7) | 6.8 (5.6–8.1) | 0.8 (0.4–1.3) | 0.2 (0.0–0.4) | 8.1 (6.8–9.5) | 1.0% | | |
| | Basque Country (2001–2006) | 0.5 (0.2–0.8) | 6.4 (5.5–7.4) | 1.1 (0.7–1.5) | 0.2 (0.0–0.4) | 8.2 (7.1–9.3) | 0.9% | | |
| | Madrid (2001–2003) | 0.1 (0.0–0.2) | 5.1 (4.1–6.1) | 1.3 (0.8–1.9) | 0.0 (0.0–0.0) | 6.4 (5.3–7.6) | 0.6% | | |
| | Turin (2006–2010) | 0.1 (0.0–0.4) | 2.7 (1.7–3.8) | 1.3 (0.5–2.2) | 0.0 (0.0–0.0) | 4.2 (2.8–5.6) | 0.6% | | |
| Eastern Europe | Slovenia (2002–2006) | 6.2 (5.2–7.3) | 48.7 (45.9–51.6) | 20.9 (19.0–22.7) | — | 75.7 (72.3–79.1) | 6.2% | | |
| | Hungary (1999–2002) | 12.2 (11.5–12.9) | 166.2 (163.4–168.8) | 19.1 (18.3–20.0) | 0.7 (0.5–0.9) | 198.1 (195.1–200.9) | 9.0% | | |
| | Czech Republic (1998–2003) | 0.3 (0.2–0.4) | 27.1 (26.4–27.8) | 3.0 (2.8–3.3) | 3.6 (3.3–3.9) | 34.0 (33.3–34.9) | 2.1% | | |
| | Poland (2001–2003) | 0.8 (0.7–0.9) | 10.8 (10.3–11.3) | 13.9 (13.4–14.4) | 11.5 (11.0–11.9) | 37.0 (36.2–37.8) | 3.6% | | |
| | Lithuania (2006–2009) | 24.0 (22.0–25.7) | 65.8 (62.7–68.9) | 3.9 (3.2–4.6) | 45.8 (43.3–48.3) | 139.4 (135.2–143.8) | 7.4% | | |
| | Estonia (1998–2002) | 48.2 (44.9–52.1) | 27.9 (25.3–30.7) | 8.6 (7.1–10.1) | 58.1 (54.1–61.7) | 142.8 (136.8–148.8) | 5.9% | | |
| All—median (interquartile range) | | 0.8 (0.4–6.8) | 16.0 (9.6–35.2) | 7.4 (1.9–11.8) | 0.7 (0.2–7.5) | 31.0 (21.1–74.8) | 3.3% | | |

Age-standardized mortality rate in deaths per 100,000 person-years. Due to confidentiality restrictions, some countries did not supply information on causes of death that involved very small numbers of deaths (indicated by dashes).

Table 3. Latest observed mortality from alcohol-related causes among women aged 35–79 y, by population.

| Geographical Region | Population (Time Period) | Age-Standardized Mortality Rate (95% CI) | | | | | Total Alcohol-Related Deaths as Percent of Total Mortality |
|---|-------------------------------|--|---------------------------|--|-------------------|------------------------------|--|
| | | Alcoholic Cardiomyopathy | Alcoholic Liver Cirrhosis | Alcoholic Psychosis, Dependence, and Abuse | Alcohol Poisoning | Total Alcohol-Related Causes | |
| Northern Europe | Finland (2006–2010) | 0.6 (0.5–0.8) | 16.8 (15.8–17.8) | 1.7 (1.4–2.0) | 7.2 (6.6–7.9) | 26.4 (25.2–27.6) | 5.6% |
| | Sweden (2005–2008) | 0.2 (0.1–0.2) | 7.9 (7.0–8.7) | 2.0 (1.8–2.4) | 1.1 (0.9–1.3) | 7.2 (6.7–7.7) | 1.5% |
| | Norway (2006–2009) | — | 4.4 (3.6–5.0) | — | — | 9.0 (7.9–10.2) | 1.6% |
| | Denmark (2001–2005) | — | 16.0 (15.1–17.0) | 9.4 (8.7–10.2) | 0.3 (0.2–0.4) | 25.9 (24.7–27.1) | 3.5% |
| Western Europe | Scotland (2006–2010) | — | — | — | — | 16.7 (12.2–20.9) | 2.5% |
| | England and Wales (2006–2009) | 0.0 (0.0–0.0) | 8.4 (6.0–11.1) | 1.9 (0.9–3.3) | 0.1 (0.0–0.4) | 10.5 (7.6–13.5) | 1.8% |
| | Belgium (2004–2005) | — | 8.6 (7.8–9.3) | 2.9 (2.5–3.3) | — | 11.6 (10.4–12.3) | 1.9% |
| France (2003–2007) | — | — | — | — | 10.8 (8.0–13.6) | 2.5% | |
| Switzerland (2005–2008) | 0.1 (0.0–0.2) | 7.9 (7.0–8.7) | 2.2 (1.8–2.6) | 0.1 (0.0–0.2) | 10.2 (9.3–11.2) | 2.4% | |
| Austria (2001–2002) | 0.2 (0.0–0.4) | 2.5 (1.8–3.2) | 2.5 (1.8–3.2) | 0.0 (0.0–0.1) | 5.2 (4.3–6.3) | 0.9% | |
| Barcelona (2007–2010) | 0.1 (0.0–0.2) | 2.2 (1.6–2.9) | 0.2 (0.0–0.3) | 0.1 (0.0–0.2) | 2.5 (1.8–3.2) | 0.7% | |
| Basque Country (2001–2006) | 0.1 (0.0–0.2) | 1.2 (0.8–1.5) | 0.3 (0.1–0.5) | 0.3 (0.1–0.5) | 1.8 (1.3–2.3) | 0.5% | |
| Madrid (2001–2003) | 0 (0.0–0.0) | 1.0 (0.6–1.4) | 0.2 (0.0–0.3) | 0.0 (0.0–0.0) | 1.1 (0.7–1.6) | 0.2% | |
| Turin (2006–2010) | 0 (0.0–0.0) | 0.9 (0.3–1.7) | 0.1 (0.0–0.3) | 0.0 (0.0–0.0) | 1.0 (0.4–1.8) | 0.3% | |
| Slovenia (2002–2006) | 0.8 (0.5–1.1) | 16.3 (14.6–17.9) | 3.5 (2.9–4.3) | — | 20.4 (18.6–22.1) | 3.6% | |
| Hungary (1999–2002) | 1.9 (1.6–2.1) | 46.5 (45.2–47.7) | 2.9 (2.6–3.2) | 0.1 (0.1–0.2) | 51.4 (50.0–52.7) | 5.0% | |
| Czech Republic (1998–2003) | 0.1 (0.0–0.1) | 7.5 (7.0–7.9) | 0.7 (0.5–0.8) | 1.0 (0.8–1.1) | 9.2 (8.7–9.6) | 1.1% | |
| Poland (2001–2003) | 0.1 (0.0–0.1) | 2.0 (1.8–2.2) | 1.3 (1.1–1.4) | 1.3 (1.2–1.5) | 4.6 (4.3–4.9) | 1.2% | |
| Lithuania (2006–2009) | 5.9 (5.2–6.8) | 24.2 (22.5–26.0) | 0.7 (0.4–1.0) | 12.1 (10.9–13.3) | 42.9 (40.6–45.3) | 6.9% | |
| Estonia (1998–2002) | 13.3 (11.8–15.0) | 12.0 (10.5–13.8) | 2.2 (1.6–2.9) | 14.6 (12.8–16.5) | 42.1 (39.2–45.0) | 4.3% | |
| All—median (interquartile range) | | 0.1 (0.1–0.7) | 7.9 (2.3–15.0) | 1.9 (0.7–2.5) | 0.3 (0.1–1.2) | 10.3 (5.0–21.8) | 1.9% |

Age-standardized mortality rate in deaths per 100,000 person-years. Due to confidentiality restrictions, some countries did not supply information on causes of death that involved very small numbers of deaths (indicated by dashes).

doi:10.1371/journal.pmed.1001909.t003

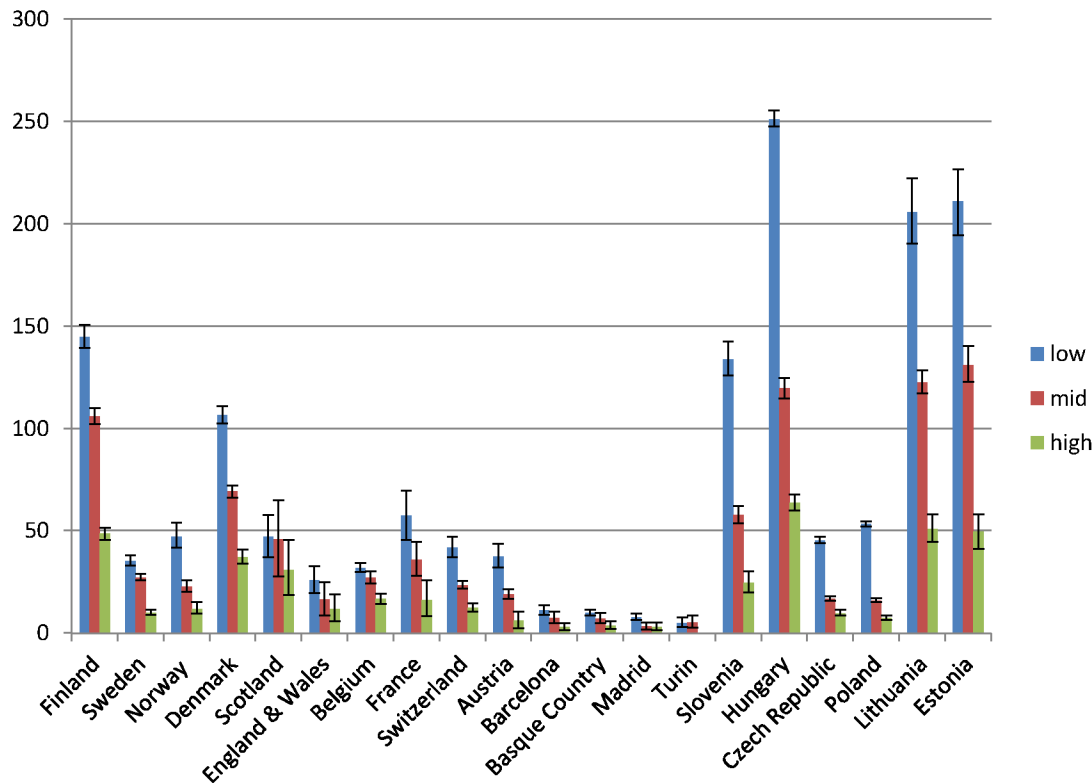


Fig 1. Latest observed mortality from alcohol-related causes among men aged 35–79 y, by population and level of education. The y-axis shows alcohol-related mortality, with 95% CIs, in deaths per 100,000 person-years.

doi:10.1371/journal.pmed.1001909.g001

populations, including Finland and Norway. The main change in inequality, however, is a strong rise in absolute inequality, as measured by the SII, in several countries in Eastern Europe (Hungary, Lithuania, and Estonia) and Northern Europe (Finland and Denmark). For example, among Finnish men the RII increased from 2.7 (95% CI 2.2–3.2) in 1980–1984 to 3.6 (95% CI 3.3–4.0) in 2005–2009, and over the same period the SII increased from 46.4 (95% CI 39.1–54.2) to 112.5 (95% CI 106.2–118.8). On the other hand, the absolute inequality in alcohol-related mortality has been stable in several other populations and has been declining among men in France.

[S6](#) and [S7](#) Tables show trends in relative and absolute inequality in alcohol-related mortality by occupational class. Here again, we observe a strong rise of absolute inequality among men in several countries/regions, including Finland, England and Wales, and Lithuania.

The rise of absolute inequality in alcohol-related mortality in several populations was due to a remarkable increase in mortality from alcohol-related conditions among lower educated individuals, with stable or only moderately increasing mortality among higher educated individuals, as shown in [Figs 3–6](#). However, trends are far from uniform. For example, while mortality among men in the low education group has risen enormously in Finland and Denmark, it has been relatively stable in Sweden and Norway. The stability, or even tendency towards decline, of mortality from alcohol-related causes among lower educated men in France, Switzerland, Spain, and Italy is also noteworthy.

Similar results are seen for women ([Figs 7–10](#)) and for men by occupational class ([S1](#) and [S2](#) Figs).

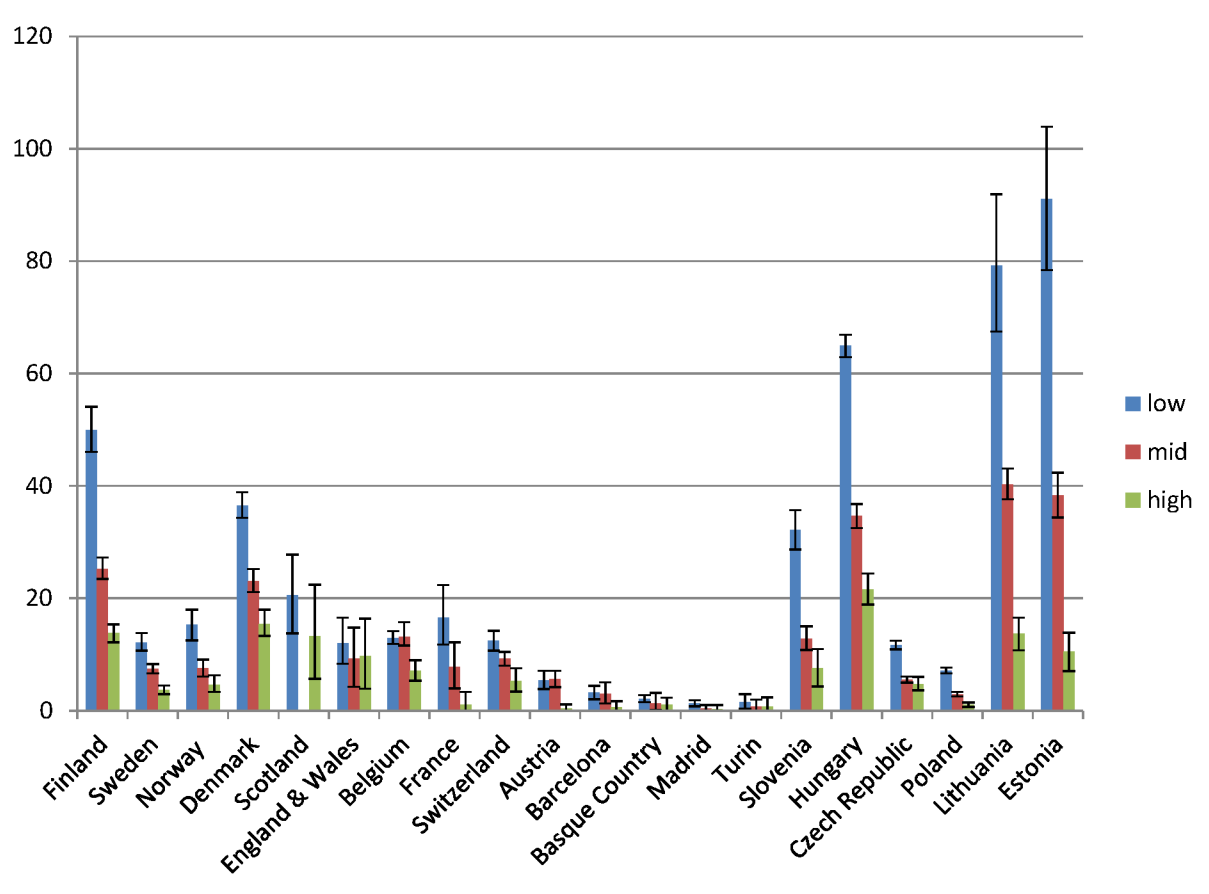


Fig 2. Latest observed mortality from alcohol-related causes among women aged 35–79 y, by population and level of education. The y-axis shows alcohol-related mortality, with 95% CIs, in deaths per 100,000 person-years. Among Scottish women in the middle education group, the number of deaths was smaller than ten, and because of confidentiality regulations, data could not be supplied for this group.

doi:10.1371/journal.pmed.1001909.g002

Discussion

Summary of Main Findings

Rates of alcohol-related mortality are higher in lower socioeconomic groups (as measured by education level and occupational class) in all countries. Both relative and absolute inequalities are largest in Eastern Europe, and Finland and Denmark also have very large absolute inequalities in alcohol-related mortality. Over time, the relative inequality in alcohol-related mortality has increased in many countries, but the main change is a strong rise in the absolute inequality in several countries in Eastern Europe (Hungary, Lithuania, and Estonia) and Northern Europe (Finland and Denmark) due to a rapid rise in alcohol-related mortality in lower socioeconomic groups. In some of these countries alcohol-related causes now account for 10% or more of the inequality in total mortality in the age group 35–79 y.

Strengths and Limitations

This study is unique in its population-wide coverage of a wide range of European countries and a long period of time, using two indicators of socioeconomic position: education level and occupational class. The main limitation is that we had to rely on routinely registered data, and that cause-of-death data are a far from perfect source of information on alcohol-related mortality.

Table 4. Age-adjusted educational inequality in mortality from alcohol-related causes in the most recent observed period, by population and sex, for individuals aged 35–79 y.

| Geographical Region | Population (Period) | Men | | | Women | | |
|---------------------|---|-------------------|----------------------|-----------------------------------|------------------|-------------------|-----------------------------------|
| | | RII (95% CI) | SII (95% CI) | Percent of SII in Total Mortality | RII (95% CI) | SII (95% CI) | Percent of SII in Total Mortality |
| Northern Europe | Finland (2006–2010) | 3.6 (3.3, 4.0) | 112.5 (106.2, 118.8) | 12.8% | 5.6 (4.7, 6.8) | 36.9 (33.8, 40.1) | 10.3% |
| | Sweden (2005–2008) | 3.8 (3.2, 4.4) | 28.8 (26.1, 31.6) | 5.5% | 4.3 (3.2, 5.8) | 9.0 (7.5, 10.5) | 2.6% |
| | Norway (2006–2009) | 6.4 (4.7, 8.6) | 37.4 (31.4, 41.7) | 4.5% | 4.7 (2.9, 7.7) | 11.7 (9.4, 14.3) | 2.3% |
| | Denmark (2001–2005) | 3.9 (3.5, 4.4) | 88.1 (82.0, 94.3) | 10.8% | 3.8 (3.1, 4.6) | 30.2 (26.5, 33.7) | 5.5% |
| Western Europe | Scotland (2006–2010) | 1.0 (0.5, 2.2) | 1.5 (–25.7, 30.9) | 0.3% | 1.6 (0.5, 6.0) | 7.4 (–10.2, 24.0) | 2.3% |
| | England and Wales (2006–2009) | 3.4 (1.4, 8.4) | 20.8 (6.7, 32.1) | 3.2% | 1.5 (0.5, 4.4) | 4.2 (–5.4, 14.3) | 1.1% |
| | Belgium (2004–2005) | 2.4 (1.9, 3.0) | 23.3 (18.8, 27.8) | 2.7% | 1.9 (1.4, 2.7) | 7.4 (3.8, 11.0) | 1.9% |
| | France (2003–2007) | 4.1 (2.3, 7.4) | 47.7 (29.3, 61.4) | 6.6% | 10.3 (2.9, 36.5) | 18.0 (10.7, 24.0) | 6.0% |
| | Switzerland (2005–2008) | 4.7 (3.7, 6.1) | 32.3 (28.1, 36.1) | 5.0% | 2.3 (1.6, 3.3) | 7.9 (4.4, 10.8) | 3.5% |
| | Austria (2001–2002) | 5.8 (3.9, 8.5) | 30.8 (25.6, 35.4) | 4.7% | 1.4 (0.7, 3.1) | 1.8 (–1.8, 5.3) | 0.7% |
| Southern Europe | Barcelona (2007–2010) | 6.0 (2.8, 13.2) | 11.6 (8.0, 14.9) | 1.9% | 5.6 (1.3, 24.2) | 3.4 (1.0, 5.1) | 1.8% |
| | Basque Country (2001–2006) | 3.7 (1.9, 7.2) | 9.4 (5.3, 13.2) | 1.9% | 3.7 (0.7, 18.4) | 2.1 (–0.3, 3.6) | 1.5% |
| | Madrid (2001–2003) | 5.9 (2.4, 14.4) | 9.2 (5.7, 12.0) | 1.5% | 5.4 (0.5, 53.3) | 1.5 (0.1, 2.7) | 1.2% |
| | Turin (2006–2010) | 2.5 (0.6, 10.1) | 3.6 (–0.8, 7.8) | 0.7% | 3.0 (0.2, 49.7) | 1.0 (–1.7, 2.8) | 0.6% |
| Eastern Europe | Slovenia (2002–2006) | 8.0 (6.6, 9.7) | 117.8 (109.9, 124.9) | 10.5% | 8.5 (5.7, 12.7) | 32.2 (28.0, 36.2) | 8.2% |
| | Hungary (1999–2002) | 7.2 (6.7, 7.8) | 299.9 (292.6, 307.4) | 10.9% | 4.7 (4.2, 5.4) | 67.0 (62.9, 70.8) | 7.0% |
| | Czech Republic (1998–2003) | 10.6 (9.0, 12.4) | 56.2 (53.9, 58.5) | 0.3% | 4.8 (3.8, 6.2) | 12.0 (10.4, 13.5) | 0.2% |
| | Poland (2001–2003) | 18.5 (16.2, 21.1) | 66.4 (64.7, 68.3) | 1.5% | 10.1 (7.6, 13.5) | 7.5 (6.9, 8.1) | 0.6% |
| | Lithuania (2006–2009) | 4.5 (3.9, 5.3) | 177.6 (163.2, 191.0) | 8.8% | 6.9 (5.3, 9.0) | 64.2 (58.0, 70.4) | 9.1% |
| | Estonia (1998–2002) | 4.5 (3.7, 5.4) | 181.4 (162.8, 196.7) | 5.1% | 9.0 (6.6, 12.4) | 67.4 (60.7, 73.9) | 6.2% |
| | All—median (interquartile range) | | 4.5 (3.7, 6.1) | 34.8 (18.5, 94.2) | 4.6% | 4.7 (2.8, 6.0) | 8.5 (4.0, 30.7) |

doi:10.1371/journal.pmed.1001909.t004

It has been suggested that differences between European countries in the level of mortality from alcohol-related conditions are likely to be at least partly due to different recording practices [8]. Between-country differences in mortality levels as observed in the present study—which also strongly influence the absolute inequality in mortality from alcohol-related conditions—should therefore be regarded with caution. For example, the quality and coverage of alcohol-related cause-of-death data have been characterized as particularly good in Finland [19], which may partly be due to better recognition of alcohol-related conditions or a relative absence of social stigma associated with alcohol abuse in this country. By contrast, recording whether excessive alcohol consumption is the cause of liver cirrhosis may be far from complete in other countries [39,40].

Although under-recording is probably the most prevalent source of bias, over-recording has been reported in Hungary, where liver cirrhosis was often assigned as a cause of death in cases of diagnostic uncertainty [41]. To redress this problem, a change in coding rules was implemented in 1996. From our experience working with cause-of-death statistics in Hungary (K. K.), this resulted in a substantial drop in mortality from alcoholic liver cirrhosis. This implies that the mortality rate from alcohol-related causes in Hungary in the early 1980s and early 1990s, as presented in Tables 2 and 3 and Figs 3, 4, 7 and 8, was overestimated, and that the real increase was even larger than suggested by our data.

Over- and under-recording may also differ between socioeconomic groups or change over time. For example, the lower mortality rate from alcohol-related causes among those with higher socioeconomic position could be partly due to social stigma, and to medical doctors

Table 5. Trends in RII for educational inequality in mortality from alcohol-related causes among men aged 35–79 y, ca. 1980–2010, by population.

| Geographical Region | Population | RII (95% CI) | | | | | |
|---------------------|------------------------|-----------------|----------------|------------------|----------------|----------------|----------------|
| | | 1980–1984 | 1985–1989 | 1990–1994 | 1995–1999 | 2000–2004 | 2005–2009 |
| Northern Europe | Finland | 2.7 (2.2–3.2) | 2.6 (2.2–3.0) | 3.0 (2.6–3.5) | 3.3 (2.9–3.7) | 3.2 (2.9–3.5) | 3.6 (3.3–4.0) |
| | Sweden | | | 4.3 (3.6–5.2) | 4.1 (3.5–4.8) | 4.7 (4.0–5.4) | 3.8 (3.2–4.4) |
| | Norway | 2.6 (2.1–3.2) | 2.9 (2.4–3.6) | 3.9 (3.1–4.8) | 4.2 (3.4–5.1) | 5.2 (4.2–6.4) | 6.4 (4.7–8.6) |
| | Denmark | | | 3.0 (2.6–3.5) | 2.7 (2.4–3.1) | 3.9 (3.5–4.4) | |
| Western Europe | Scotland (UK) | | | N/E | 3.1 (0.4–23.3) | 3.2 (1.6–6.4) | 1.0 (0.5–2.2) |
| | England and Wales (UK) | | | | | 3.0 (1.3–6.9) | 3.4 (1.4–8.4) |
| | France | 8.8 (3.0–29.3) | 5.7 (2.8–11.9) | 6.9 (3.6–13.0) | 9.2 (4.6–18.4) | 4.2 (2.5–7.1) | 4.1 (2.3–7.4) |
| | Switzerland | | | 5.6 (4.7–6.7) | 4.3 (3.6–5.1) | 6.4 (5.3–7.8) | 4.7 (3.7–6.1) |
| | Austria | 4.7 (2.7–8.3) | | 5.4 (3.5–8.4) | | 5.8 (3.9–8.5) | |
| Southern Europe | Spain (Barcelona) | | | 8.7 (3.7–20.5) | 9.9 (4.4–22.1) | 8.8 (4.1–18.6) | 6.0 (2.8–13.2) |
| | Spain (Basque Country) | | | | 7.8 (3.4–18.2) | 3.7 (1.9–7.2) | |
| | Spain (Madrid) | | | | 6.0 (2.0–18.1) | 5.9 (2.4–14.4) | |
| | Italy (Turin) | 11.2 (1.9–66.1) | 2.0 (0.6–7.1) | 5.0 (1.1–23.4) | 5.2 (1.3–21.5) | 7.3 (2.2–23.6) | 2.5 (0.6–10.1) |
| Eastern Europe | Slovenia | | | 14.1 (10.0–19.7) | | 8.0 (6.6–9.7) | |
| | Hungary | 7.4 (6.0–9.1) | | 8.5 (7.6–9.5) | | 7.2 (6.7–7.8) | |
| | Lithuania | | 3.3 (2.2–4.9) | | | 3.2 (2.7–3.9) | 4.2 (3.5–5.0) |
| | Estonia | | 4.4 (3.1–6.4) | | | 4.1 (3.2–5.1) | |

Trend data for England and Wales are available only for the 2000s, because only two levels of education were available for the 1980s and 1990s. Trend data for Belgium, Czech Republic, and Poland are not available because data on alcoholic liver cirrhosis were missing in earlier periods. In Lithuania and Estonia, only mortality due to alcoholic liver cirrhosis and alcohol poisoning were included in this trend table, because comparable data on other alcohol-related causes were not available for earlier time periods. N/E, not estimable.

doi:10.1371/journal.pmed.1001909.t005

being more hesitant to attach social stigma to people of social standing similar to their own [13]. Yet, it is likely that the risk of bias is less for between-country comparisons of the relative inequality in alcohol-related mortality, and for within-country comparisons of relative and absolute inequality over time, than for between-country comparisons of the absolute inequality in alcohol-related mortality.

The second limitation with the cause-of-death data is that we have studied directly alcohol-attributable causes of death only, and these cover only a part of all alcohol-attributable deaths. The Global Burden of Disease study estimated that alcohol accounts for around 11% of deaths among men in European populations, many of which are from cardiovascular disease and cancer [42]. In our data the alcohol-related causes generally account for a few percentage points only, partly because we have not taken into account such more indirect effects (Tables 2 and 3). In Finnish studies, this problem has to some extent been reduced by using data on contributory causes of death [13,19], but in international comparisons these data are not available and, even if they were, may present even greater problems of comparability.

Another limitation is that although we used the most recent data available when we undertook this study (2012–2014), some of the data are already quite old, particularly in Eastern Europe. Also, whereas data on level of education were relatively complete, data on occupational class were more often missing, particularly in Lithuania (36% missing) and Estonia (35% missing) (S2 Table). Despite the greater risk of bias that this creates, the fact that occupational class data produce findings similar to those of educational data increases confidence in our findings.

Table 6. Trends in SII for educational inequality in mortality from alcohol-related causes among men aged 35–79 y, ca. 1980–2010, by population.

| Geographical Region | Population | SII (95% CI) | | | | | | |
|------------------------|------------------------|--------------------|--------------------|----------------------|-------------------|----------------------|----------------------|--|
| | | 1980–1984 | 1985–1989 | 1990–1994 | 1995–1999 | 2000–2004 | 2005–2009 | |
| Northern Europe | | | | | | | | |
| | Finland | 46.4 (39.1, 54.2) | 57.4 (49.5, 65.3) | 66.6 (60.5, 73.4) | 83.2 (76.9, 89.7) | 87.1 (80.7, 94.0) | 112.5 (106.2, 118.8) | |
| | Sweden | | | 33.4 (30.3, 36.5) | 30.8 (28.2, 33.5) | 33.5 (30.8, 35.8) | 28.8 (26.1, 31.6) | |
| | Norway | 32.5 (25.0, 38.0) | 42.3 (35.8, 48.7) | 45.1 (39.0, 51.0) | 43.8 (39.3, 48.4) | 39.7 (35.7, 42.9) | 37.4 (31.4, 41.7) | |
| | Denmark | | | 52.0 (45.6, 57.8) | 56.0 (50.1, 61.8) | 88.1 (82.0, 94.3) | | |
| Western Europe | | | | | | | | |
| | Scotland (UK) | | | 18.6 (12.1, 26.5) | 18.7 (–9.2, 38.9) | 76.4 (34.4, 112.1) | 1.5 (–25.7, 30.9) | |
| | England and Wales (UK) | | | | | 18.1 (3.2, 28.5) | 20.8 (6.7, 32.1) | |
| | France | 94.1 (63.7, 117.2) | 85.5 (59.3, 107.7) | 66.4 (50.5, 79.5) | 70.2 (54.9, 84.1) | 53.4 (38.9, 66.5) | 47.7 (29.3, 61.4) | |
| | Switzerland | | | 43.3 (39.6, 46.6) | 39.4 (35.5, 43.1) | 43.3 (40.1, 46.3) | 32.3 (28.1, 36.1) | |
| | Austria | 17.6 (12.4, 21.8) | | 27.1 (21.5, 32.4) | | 30.8 (25.6, 35.4) | | |
| Southern Europe | | | | | | | | |
| | Spain (Barcelona) | | | 13.4 (9.7, 16.3) | 15.3 (11.5, 18.4) | 14.1 (10.8, 17.0) | 11.6 (8.0, 14.9) | |
| | Spain (Basque country) | | | | 12.7 (9.1, 15.5) | 9.4 (5.3, 13.2) | | |
| | Spain (Madrid) | | | | 8.5 (4.8, 11.5) | 9.2 (5.7, 12.0) | | |
| | Italy (Turin) | 10.8 (5.7, 14.3) | 3.8 (–2.7, 9.5) | 5.7 (1.3, 9.0) | 6.8 (1.9, 10.6) | 9.5 (5.0, 13.0) | 3.6 (–0.8, 7.8) | |
| Eastern Europe | | | | | | | | |
| | Slovenia | | | 150.0 (139.9, 159.2) | | 117.8 (109.9, 124.9) | | |
| | Hungary | 79 (74.2, 84.0) | | 235.2 (227.5, 242.2) | | 299.9 (292.6, 307.4) | | |
| | Lithuania | | 26.8 (21.8, 31.7) | | | 90.4 (79.0, 101.3) | 137.7 (125.1, 148.2) | |
| | Estonia | | 45.5 (36.9, 54.3) | | | 104.1 (89.6, 116.9) | | |

Trend data for England and Wales are available only for the 2000s, because only two levels of education were available for the 1980s and 1990s. Trend data for Belgium, Czech Republic, and Poland are not available because data on alcoholic liver cirrhosis were missing in earlier periods. In Lithuania and Estonia, only mortality due to alcoholic liver cirrhosis and alcohol poisoning were included in this trend table, because comparable data on other alcohol-related causes were not available for earlier time periods.

doi:10.1371/journal.pmed.1001909.t006

Table 7. Trends in RII for educational inequality in mortality from alcohol-related causes among women aged 55–79 y, ca. 1980–2010, by population.

| Geographical Region | Population | RII (95% CI) | | | | | |
|---------------------|------------------------|-----------------|----------------|-----------------|--------------------|----------------|-----------------|
| | | 1980–1984 | 1985–1989 | 1990–1994 | 1995–1999 | 2000–2004 | 2005–2009 |
| Northern Europe | Finland | 1.7 (1.1–2.7) | 2.5 (1.8–3.6) | 3.6 (2.7–4.9) | 3.8 (2.9–4.8) | 4.7 (3.8–5.8) | 5.6 (4.7–6.8) |
| | Sweden | | | 3.8 (2.6–5.6) | 3.9 (2.8–5.3) | 3.8 (2.9–5.0) | 4.3 (3.2–5.8) |
| | Norway | 1.5 (1.0–2.3) | 1.2 (0.8–1.8) | 2.4 (1.6–3.6) | 3.1 (2.1–4.6) | 4.9 (3.3–7.4) | 4.7 (2.9–7.7) |
| | Denmark | | | 2.3 (1.7–2.9) | 2.8 (2.3–3.6) | 3.8 (3.1–4.6) | |
| Western Europe | Scotland (UK) | | | 4.8 (0.1–310.0) | 6.9 (0.1–423.0) | 2.7 (0.9–8.1) | 1.6 (0.5–6.0) |
| | England and Wales (UK) | | | | | 1.8 (0.6–5.3) | 1.5 (0.5–4.4) |
| | France | 6.6 (1.2–44.8) | 7.1 (1.6–31.6) | 2.2 (0.7–6.5) | 6.1 (1.9–19.8) | 4.5 (1.8–11.4) | 10.3 (2.9–36.5) |
| | Switzerland | | | 2.1 (1.6–2.8) | 1.6 (1.2–2.0) | 1.7 (1.2–2.2) | 2.3 (1.6–3.3) |
| | Austria | 5.3 (1.3–22.2) | | 1.3 (0.5–3.7) | | 1.4 (0.7–3.1) | |
| Southern Europe | Spain (Barcelona) | | | 4.8 (0.8–27.9) | 21.8 (3.0–157.5) | 7.9 (1.7–36.8) | 5.6 (1.3–24.2) |
| | Spain (Basque country) | | | | 3.1 (0.6–16.0) | 3.7 (0.7–18.4) | |
| | Spain (Madrid) | | | | 1.1 (0.2–7.8) | 5.4 (0.5–53.3) | |
| | Italy (Turin) | 4.4 (0.1–273.3) | 0.5 (0.0–4.2) | 3.0 (0.2–38.7) | 61.0 (0.9–3,955.3) | 3.0 (0.5–16.8) | 3.0 (0.2–49.7) |
| Eastern Europe | Slovenia | | | 10.0 (5.4–18.3) | | 8.5 (5.7–12.7) | |
| | Hungary | 5.1 (3.3–8.1) | | 4.7 (3.7–5.3) | | 4.4 (4.2–5.4) | |
| | Lithuania | | 8.0 (3.5–18.3) | | | 6.9 (5.1–9.3) | 6.6 (4.9–8.7) |
| | Estonia | | 8.1 (4.0–16.8) | | | 8.8 (5.9–13.2) | |

Trend data for England and Wales are available only for the 2000s, because only two levels of education were available for the 1980s and 1990s. Trend data for Belgium, Czech Republic, and Poland are not available because data on alcoholic liver cirrhosis were missing in earlier periods. In Lithuania and Estonia, only mortality due to alcoholic liver cirrhosis and alcohol poisoning were included in this trend table, because comparable data on other alcohol-related causes were not available for earlier time periods.

doi:10.1371/journal.pmed.1001909.t007

Table 8. Trends in SII for educational inequality in mortality from alcohol-related causes among women aged 35–79 y, ca. 1980–2010, by population.

| Geographical Region | Population | SII (95% CI) | | | | | |
|---------------------|------------------------|-------------------|-------------------|-------------------|-------------------|-------------------|-------------------|
| | | 1980–1984 | 1985–1989 | 1990–1994 | 1995–1999 | 2000–2004 | 2005–2009 |
| Northern Europe | Finland | 4.3 (1.0, 7.4) | 10.4 (6.3, 13.9) | 14.8 (11.8, 17.8) | 20.4 (17.1, 23.6) | 29.0 (26.0, 32.0) | 36.9 (33.8, 40.1) |
| | Sweden | | | 7.3 (4.6, 10.0) | 4.8 (1.8, 7.5) | 4.9 (1.7, 7.7) | 7.9 (4.4, 10.8) |
| | Norway | 3.7 (–0.0, 6.8) | 2.1 (–1.9, 6.5) | 8.0 (4.2, 11.1) | 9.5 (6.5, 12.8) | 11.2 (9.0, 12.9) | 11.7 (9.4, 14.3) |
| | Denmark | | | 15.0 (10.8, 19.1) | 21.4 (17.3, 25.5) | 30.2 (26.5, 33.7) | |
| Western Europe | Scotland (UK) | | | 5.6 (–4.1, 11.8) | 10.1 (–5.7, 18.2) | 27.6 (–1.2, 50.4) | 7.4 (–10.2, 24.0) |
| | England and Wales (UK) | | | | | 4.9 (–4.0, 12.9) | 4.2 (–5.4, 14.3) |
| | France | 28.7 (5.8, 42.2) | 30.7 (12.4, 42.6) | 10.6 (–2.4, 22.5) | 22.1 (10.9, 30.8) | 19.1 (7.9, 27.2) | 18.0 (10.7, 24.0) |
| | Switzerland | | | 7.3 (4.6, 10.0) | 4.8 (1.8, 7.5) | 4.9 (1.7, 7.7) | 7.9 (4.4, 10.8) |
| | Austria | 3.7 (1.2, 5.6) | | 1.0 (–1.8, 4.0) | | 1.8 (–1.8, 5.3) | |
| Southern Europe | Spain (Barcelona) | | | 2.7 (0.2, 4.3) | 4.5 (2.8, 6.0) | 3.4 (1.4, 4.9) | 3.4 (1.0, 5.1) |
| | Spain (Basque country) | | | | 2.2 (–1.1, 4.4) | 2.1 (–0.3, 3.6) | |
| | Spain (Madrid) | | | | 0.1 (–1.7, 2.3) | 1.5 (0.1, 2.7) | |
| | Italy (Turin) | 1.4 (–1.2, 3.1) | –1.2 (–3.2, 3.0) | 1.5 (–1.5, 3.8) | 3.4 (1.6, 5.0) | 2.5 (–0.1, 5.0) | 1.0 (–1.7, 2.8) |
| Eastern Europe | Slovenia | | | 39.6 (33.5, 45.0) | | 32.2 (28.0, 36.2) | |
| | Hungary | 17.4 (13.9, 20.3) | | 55.0 (50.2, 59.8) | | 67.0 (62.9, 70.8) | |
| | Lithuania | | 9.0 (6.6, 10.9) | | | 40.4 (35.7, 44.7) | 53.3 (47.3, 58.4) |
| | Estonia | | 12.6 (9.5, 15.6) | | | 42.4 (36.4, 47.7) | |

Trend data for England and Wales are available only for the 2000s, because only two levels of education were available for the 1980s and 1990s. Trend data for Belgium, Czech Republic, and Poland are not available because data on alcoholic liver cirrhosis were missing in earlier periods. In Lithuania and Estonia, only mortality due to alcoholic liver cirrhosis and alcohol poisoning were included in this trend table, because comparable data on other alcohol-related causes were not available for earlier time periods.

doi:10.1371/journal.pmed.1001909.t008

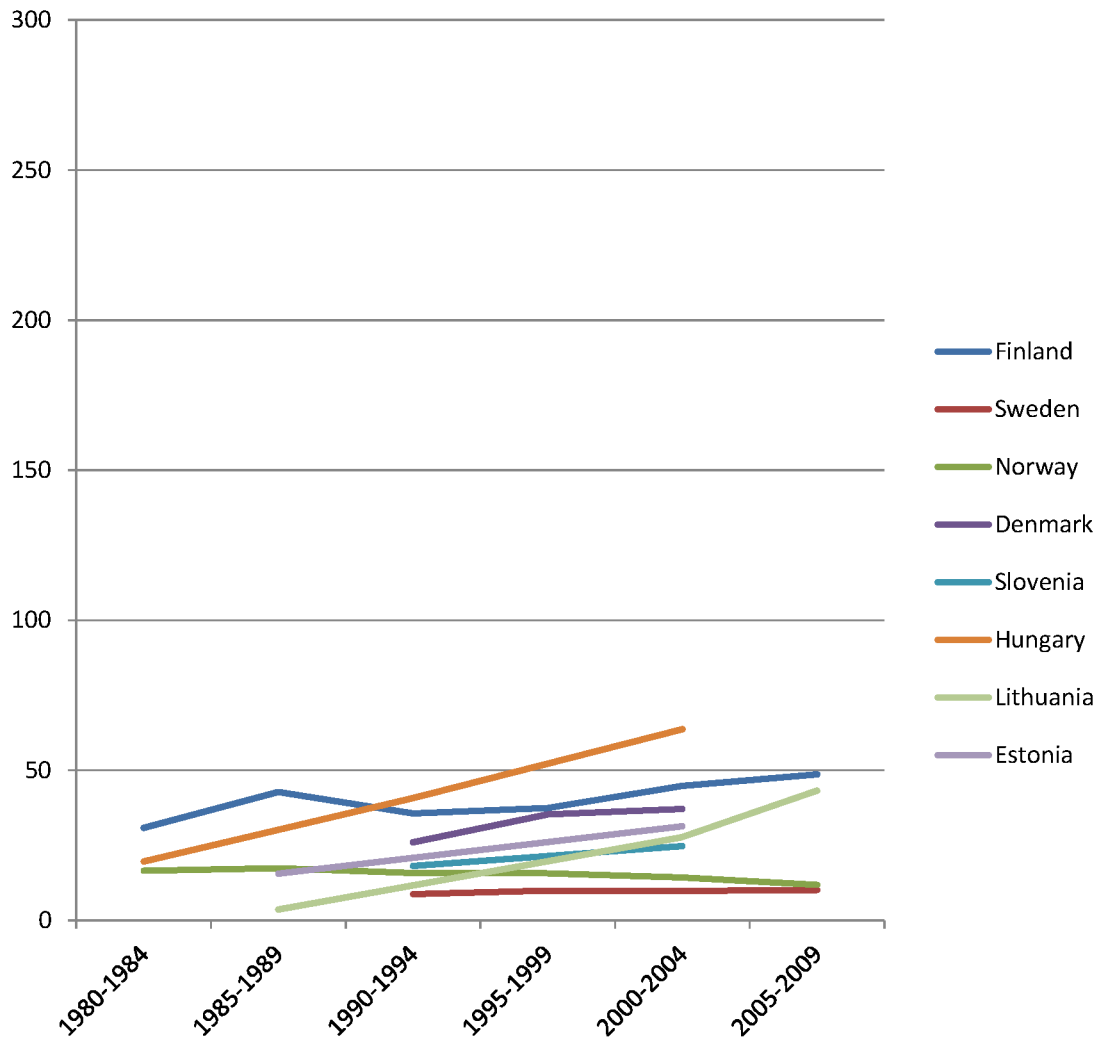


Fig 3. Trends in age-adjusted mortality from alcohol-related causes among men aged 35–79 y in the high education group in Northern and Eastern European countries, ca. 1980–2010, by country. The y-axis shows age-adjusted alcohol-related mortality in deaths per 100,000 person-years.

doi:10.1371/journal.pmed.1001909.g003

Interpretation

Excessive alcohol consumption is one of the greatest challenges for public health in Europe—in no other world region is the alcohol-attributable burden of disease higher than in Europe [43]. As our study shows, alcohol-related health problems have also become an important driver of socioeconomic inequality in mortality in many parts of the region, particularly in Eastern Europe and in the Nordic countries. Our previous study of cause-specific inequality in mortality in Europe in the 1990s already pointed in this direction [37], but our present study shows that this is also a rapidly growing problem.

The omnipresence of socioeconomic inequality in alcohol-related mortality in Europe suggests that it is linked to structural characteristics of societies, but its specific explanation is likely to be complex. First, it is important to recognize that part of the association may be due to selection factors: alcohol-related physical, mental, and social problems may lead to a lower socioeconomic position, although this is likely to affect income more than education level and

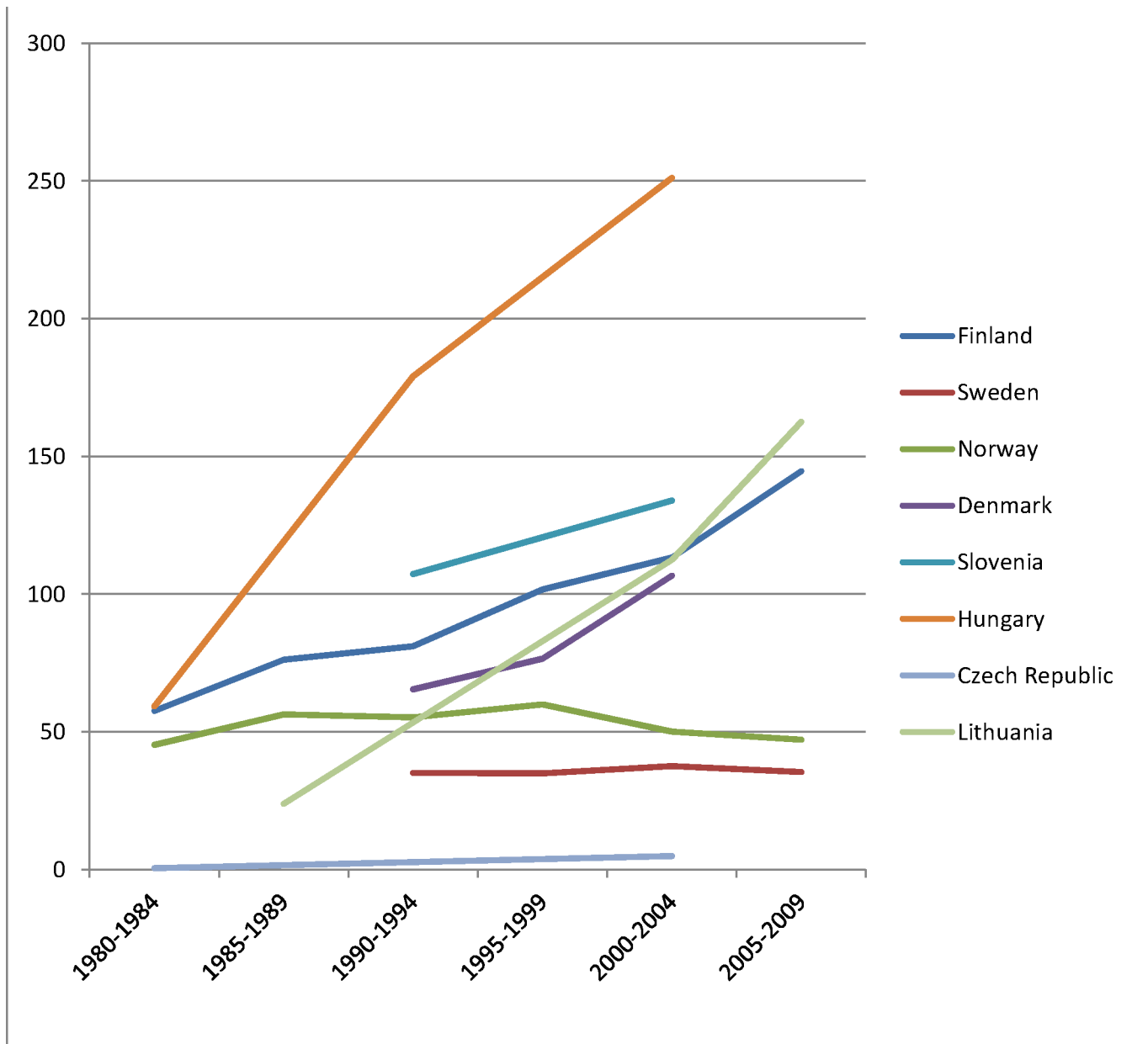


Fig 4. Trends in age-adjusted mortality from alcohol-related causes among men aged 35–79 y in the low education group in Northern and Eastern European countries, ca. 1980–2010, by country. The y-axis shows age-adjusted alcohol-related mortality in deaths per 100,000 person-years.

doi:10.1371/journal.pmed.1001909.g004

occupational class [13]. Furthermore, certain personality traits or psychological problems in childhood and adolescence may predispose both to a higher risk of problematic drinking and to lower educational level [13,14].

It is highly plausible, however, that the association between low socioeconomic status and alcohol-related health problems also partly reflects an indirect causal effect of low socioeconomic position on the risk of dying from alcohol-related conditions, both through a higher prevalence of harmful consumption levels or patterns and through a higher vulnerability to the effects of alcohol. The first may be due to a higher exposure to material and psychosocial stressors, with alcohol being used for tension reduction [44,45]. It has also been suggested that

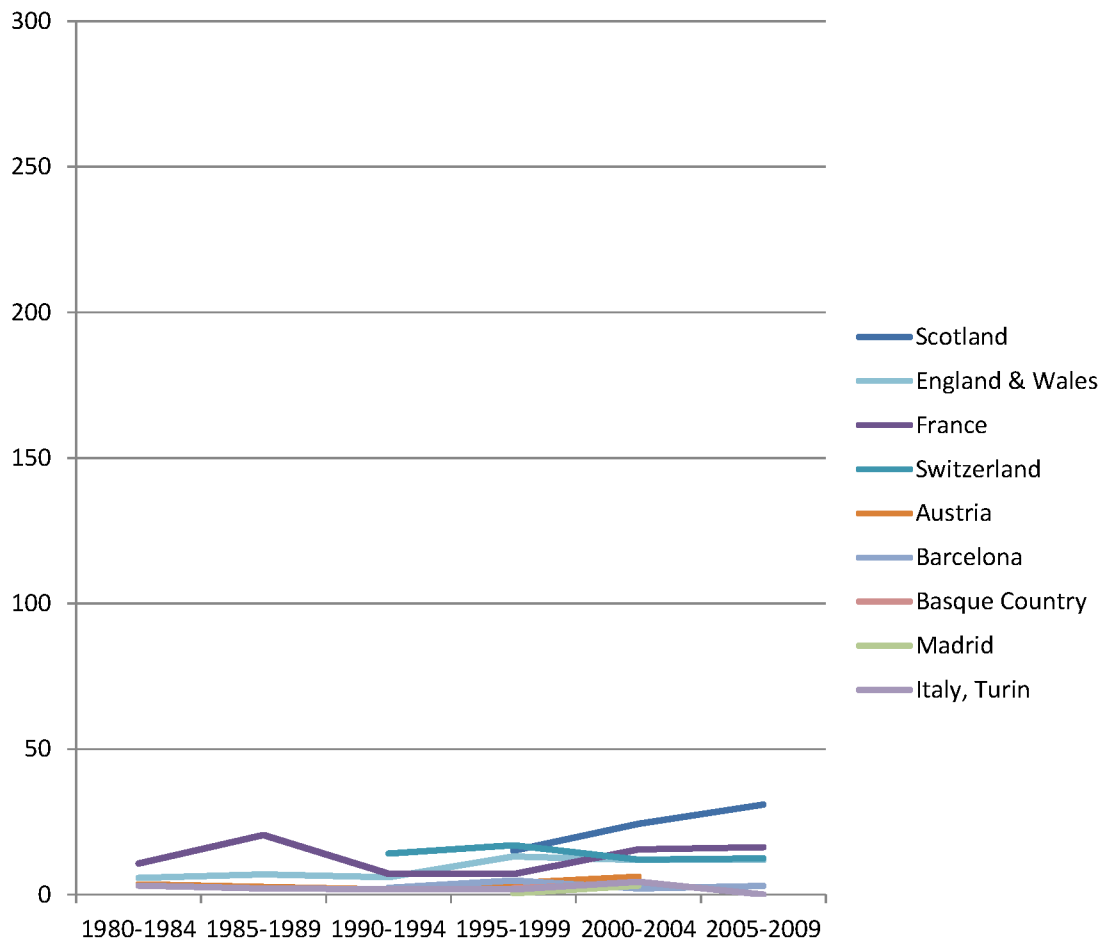


Fig 5. Trends in age-adjusted mortality from alcohol-related causes among men aged 35–79 y in the high education group in Western and Southern European countries/regions, ca. 1980–2010, by country/region. The y-axis shows age-adjusted alcohol-related mortality in deaths per 100,000 person-years.

doi:10.1371/journal.pmed.1001909.g005

individuals from lower socioeconomic groups, for example, in Hungary [46] and other Eastern European countries, are more exposed to lower quality alcoholic drinks, such as home-brewed and non-beverage alcohol, that may contain toxic compounds [47–49].

A higher vulnerability to the effects of alcohol in individuals from lower socioeconomic groups is suggested by a Finnish longitudinal study, which found that, with consumption level and drinking patterns controlled, alcohol-related hospitalizations and mortality were much more frequent in lower socioeconomic groups [50], perhaps because of an interaction with dietary habits, safety of the drinking environment, or support from work and family to address emerging alcohol problems.

We found that the inequality in alcohol-related mortality is much larger in some populations in Northern and Eastern Europe than it is in Western and Southern Europe. Part of the explanation for this may lie in different drinking cultures [51]. Binge drinking is common in Northern and Eastern Europe, and strongly socially stratified, whereas in Southern Europe, a Mediterranean style of drinking—characterized by almost daily drinking of alcohol, mostly in

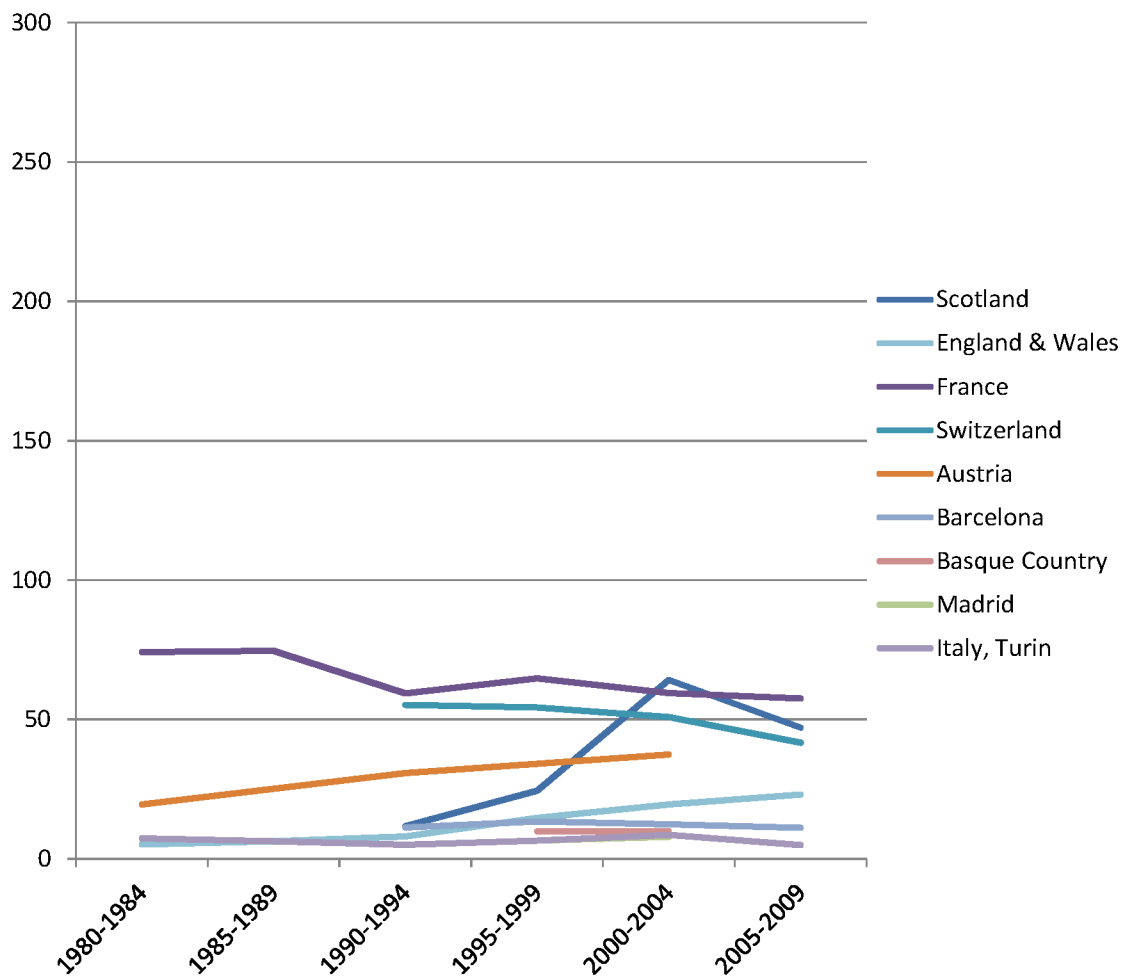


Fig 6. Trends in age-adjusted mortality from alcohol-related causes among men aged 35–79 y in the low education group in Western and Southern European countries/regions, ca. 1980–2010, by country/region. The y-axis shows age-adjusted alcohol-related mortality in deaths per 100,000 person-years. In England and Wales, individuals in the low and middle education groups could not be distinguished before 2000, and therefore both groups have been combined in the low education group in all study periods.

doi:10.1371/journal.pmed.1001909.g006

the form of wine with meals, and less acceptance of public drunkenness—still predominates, particularly in older generations, including lower socioeconomic groups [4,32]. Nevertheless, daily drinking of moderate amounts of alcohol does increase the risk of cirrhosis [52] and may be the main factor behind the inequality in alcohol-related mortality in Southern Europe, which is indeed dominated by cirrhosis mortality (Tables 2 and 3). We also found remarkable differences between men and women: whereas the relative inequality in alcohol-related mortality is sometimes larger among women than among men, the absolute inequality is almost always larger among men (Table 4).

Inequalities in alcohol-related mortality have been very dynamic, as shown by this study, which at the very least suggests that they are not immutable. To what extent do changes in the inequality in alcohol-related mortality reflect policy impacts? Trends in alcohol control policies

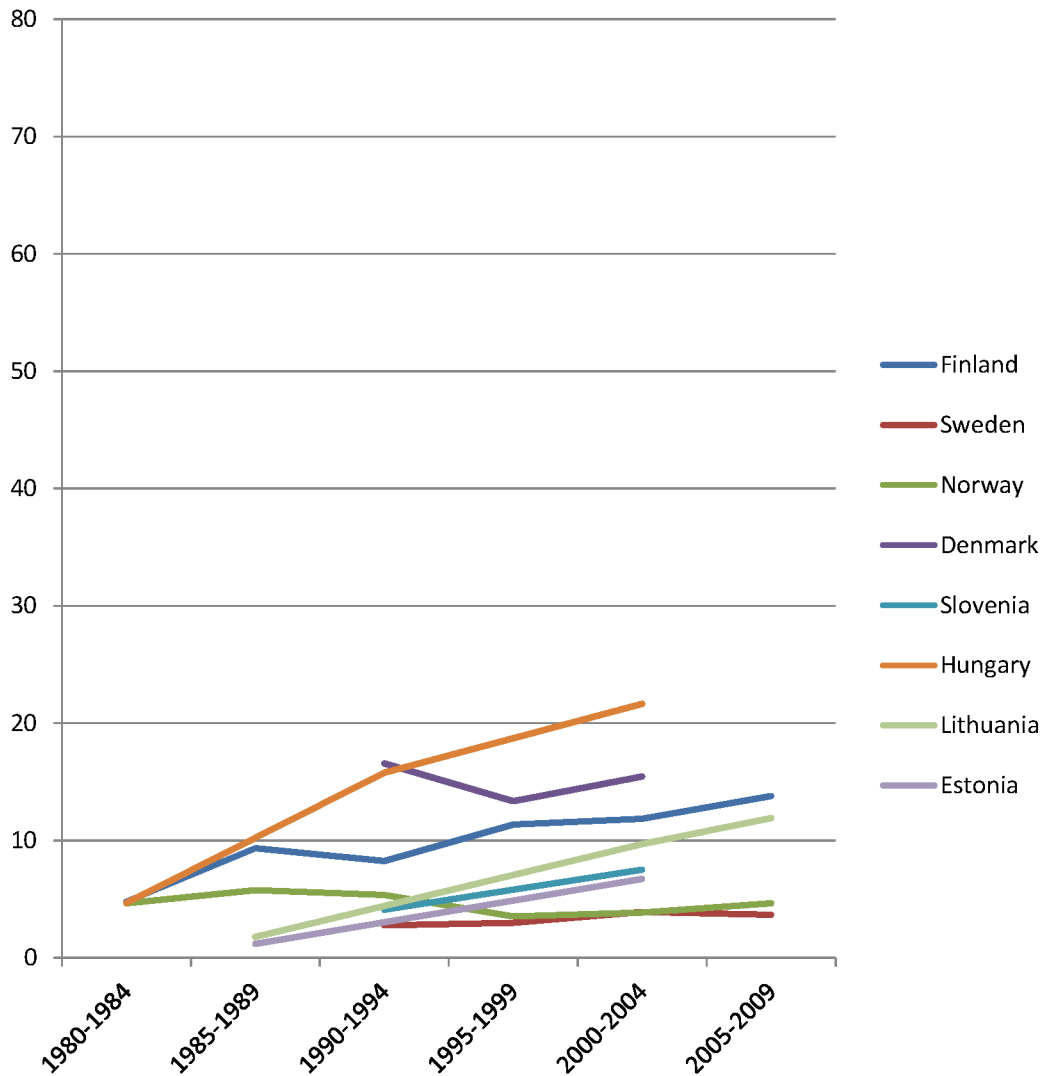


Fig 7. Trends in age-adjusted mortality from alcohol-related causes among women aged 35–79 y in the high education group in Northern and Eastern European countries, ca. 1980–2010, by country. The y-axis shows age-adjusted alcohol-related mortality in deaths per 100,000 person-years.

doi:10.1371/journal.pmed.1001909.g007

in Western Europe were analyzed in the European Comparative Alcohol Study [53]. Between 1950 and 2000, alcohol control became less strict in Northern Europe—partly as a result of harmonization of national laws and regulations after joining the European Union—but more strict in Southern Europe, including France. Although this may help to explain the relatively favorable trends in countries like France, Spain, and Italy, as has been reported before [54–56], it does not explain our findings for the Nordic countries. Loosening of alcohol control policies coincided with a rise in mortality from alcohol-related causes among lower educated men in Finland, but not in Sweden or Norway, whereas the rise in mortality from alcohol-related causes among lower educated men in Denmark coincided with a slight tightening of alcohol control policies (Figs 3, 4, 7, and 8) [57].

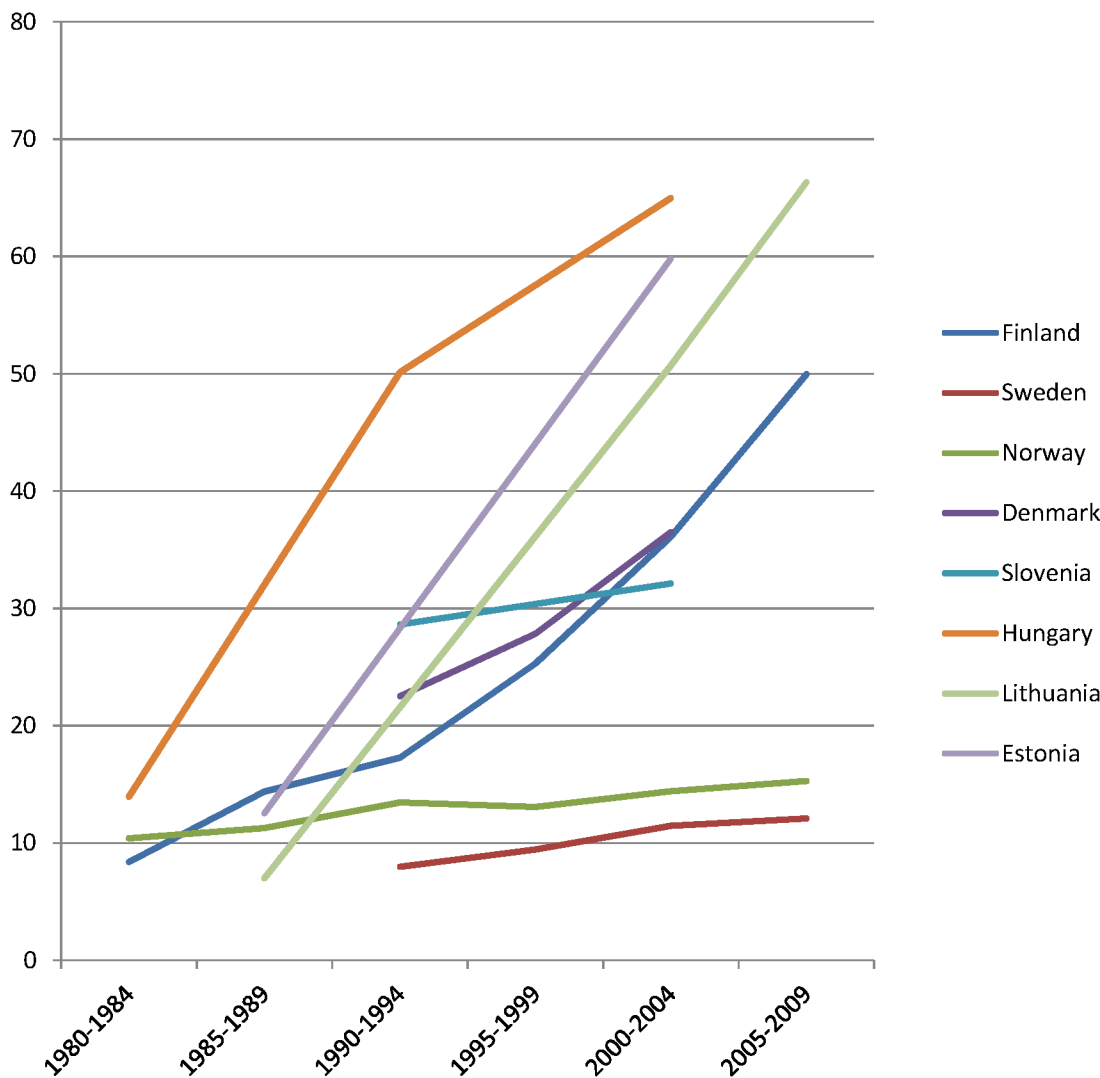


Fig 8. Trends in age-adjusted mortality from alcohol-related causes among women aged 35–79 y in the low education group in Northern and Eastern European countries, ca. 1980–2010, by country. The y-axis shows age-adjusted alcohol-related mortality in deaths per 100,000 person-years.

doi:10.1371/journal.pmed.1001909.g008

The increasing affordability of alcohol, due to a combination of rising incomes and stable or sometimes even declining price levels of alcoholic drinks, may also have played a role in the rise of alcohol-related mortality seen in many European countries. Because lower socioeconomic groups are likely to be more responsive to price changes (as shown, for example, in the case of tobacco [58]), the increased affordability of alcohol may have led to relatively larger increases in consumption in lower socioeconomic groups. Between 1996 and 2004, the affordability of alcohol has increased strongly in many European countries, including Lithuania, the United Kingdom, and Finland [59]. Finnish studies have shown that the impact of these changes has been largest in the lowest socioeconomic groups [19,22,23]. Our data suggest that the inequality in alcohol-related mortality has indeed increased most in countries, such as Lithuania and Finland, in which affordability has increased most (Figs 11 and 12).

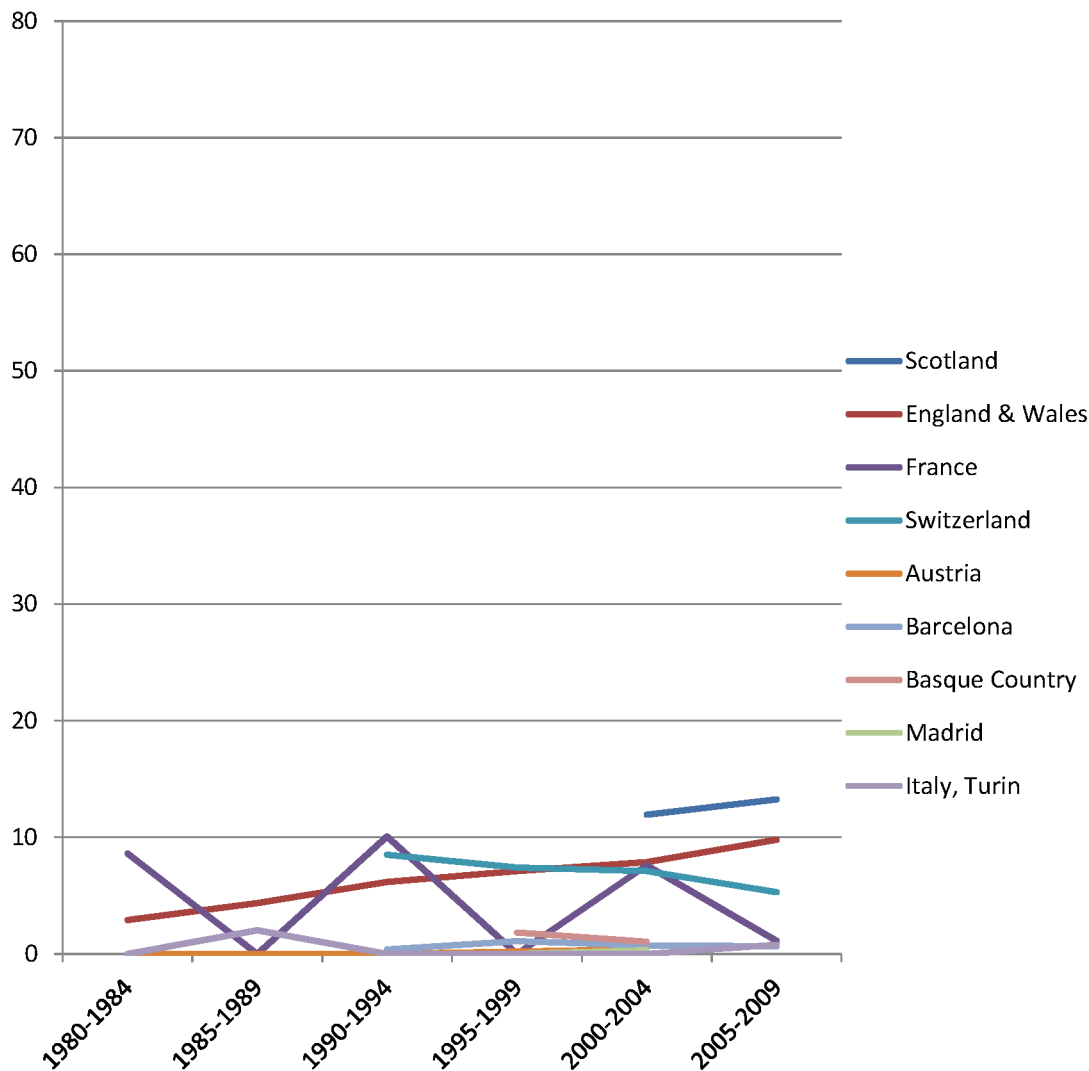


Fig 9. Trends in age-adjusted mortality from alcohol-related causes among women aged 35–79 y in the high education group in Western and Southern European countries/regions, ca. 1980–2010, by country/region. The y-axis shows age-adjusted alcohol-related mortality in deaths per 100,000 person-years.

doi:10.1371/journal.pmed.1001909.g009

Trends in alcohol policy in Eastern Europe since 1990 have not been systematically characterized [57]. In many of these countries, excessive alcohol consumption surged around 1990, when cheap alcohol flooded the market [60]. The strong increases of alcohol-related mortality seen in these countries are also likely to be a reflection of the economic crisis following the collapse of the Soviet Union and the resulting stress in the population, and of the extreme liberalization of alcohol markets with a breakdown of control measures in the chaotic first years after the political changes [61–64]. More recently, rising income and increased affordability of alcohol may also have played a role [65].

What can be done to reduce inequalities in alcohol-related mortality? The WHO Commission on Social Determinants of Health has emphasized the importance of tackling the underlying, or “upstream,” causes of inequalities in health, that is, the unequal distribution of

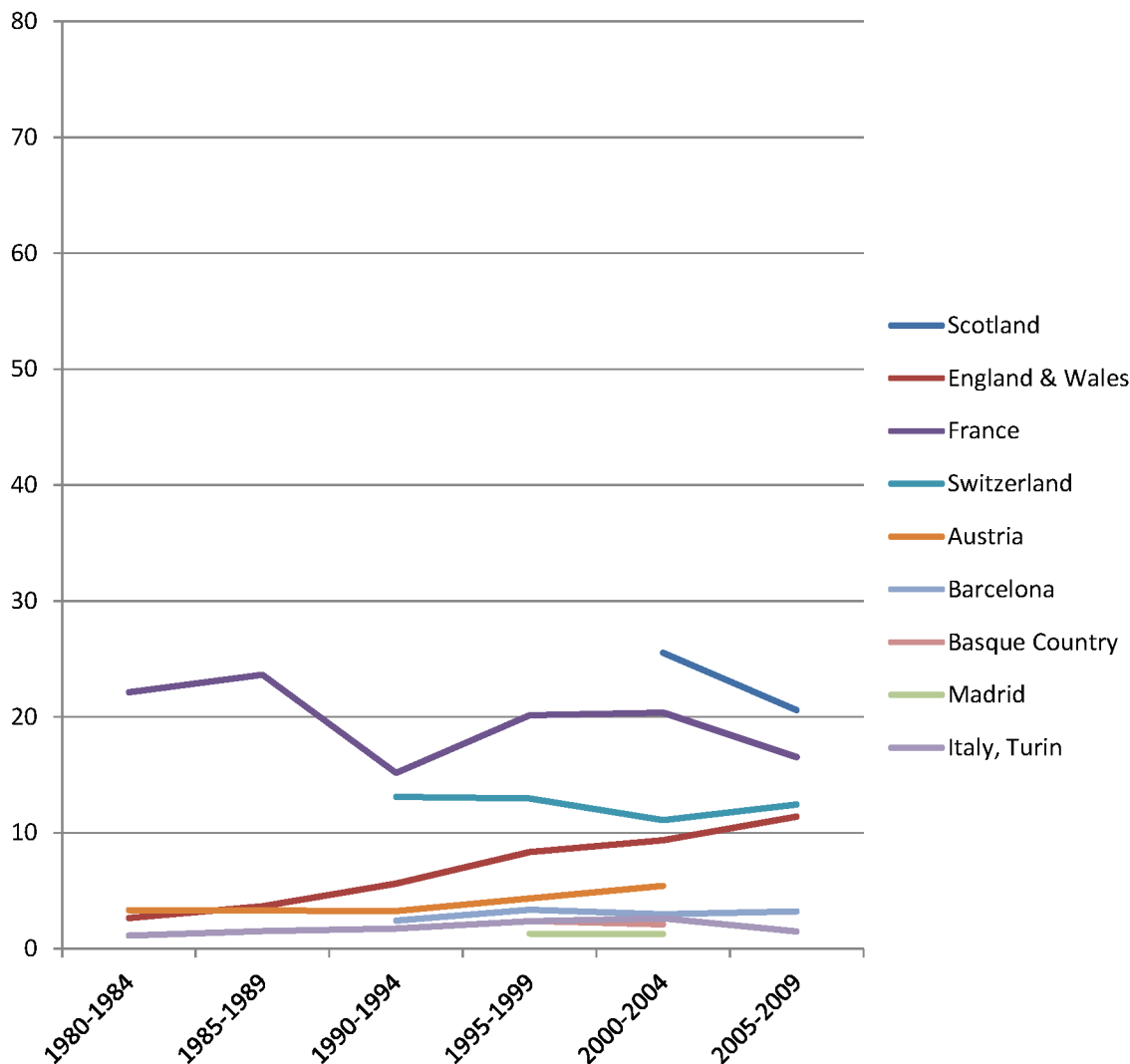


Fig 10. Trends in age-adjusted mortality from alcohol-related causes among women aged 35–79 y in the low education group in Western and Southern European countries/regions, ca. 1980–2010, by country/region. The y-axis shows age-adjusted alcohol-related mortality in deaths per 100,000 person-years. In England and Wales, individuals in the low and middle education groups could not be distinguished before 2000, and therefore both groups have been combined in the low education group in all study periods.

doi:10.1371/journal.pmed.1001909.g010

socioeconomic resources in society [66]. Some argue that if one focuses efforts to tackle health inequalities on “downstream” causes instead, such as health-related behaviors, the “gap” left by one downstream cause will soon be filled by another, and health inequalities will persist with little change [67]. Although there is some evidence for the exchangeability of downstream causes, such as between smoking and alcohol [21], our between-country comparison shows that it is possible to have small inequalities in alcohol-related mortality with large inequalities in socioeconomic resources, as in Southern Europe, as well as the reverse, as in Northern Europe.

This implies that policies and interventions redressing the higher prevalence of harmful alcohol consumption patterns in lower socioeconomic groups could help to reduce inequalities

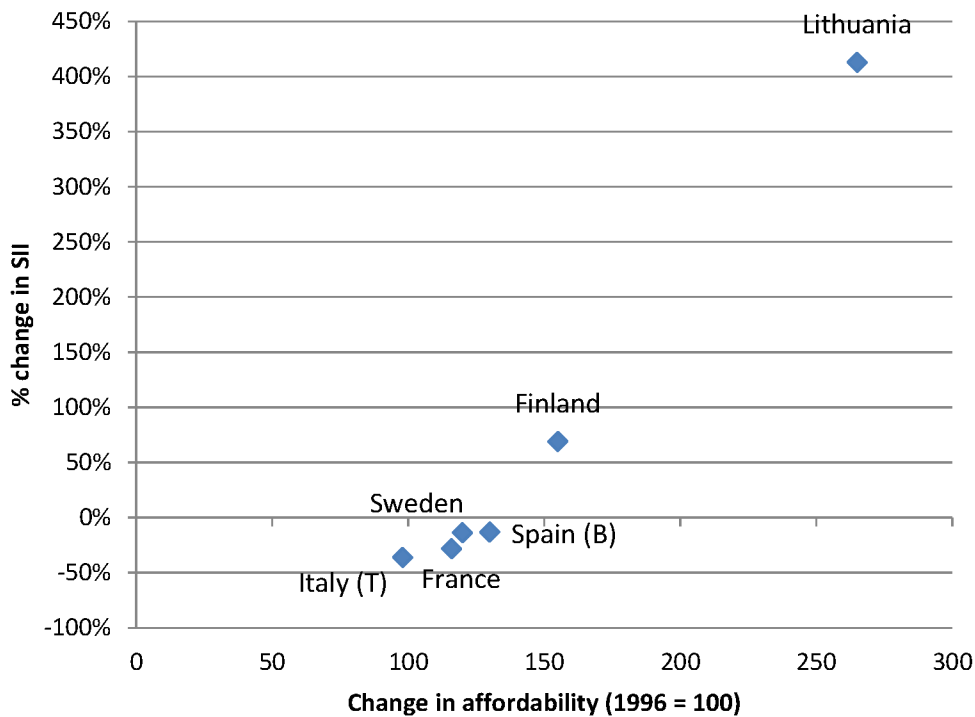


Fig 11. Change in alcohol affordability between 1996 and 2004 versus change in absolute inequality in alcohol-related mortality among men between ca. 1990–1994 and ca. 2005–2009. Data on affordability are from Rabinovich et al. [59] and give levels of affordability relative to that observed in 1996. Only countries with both data on affordability and data on SII for ca. 1990–1994 and ca. 2005–2009 are included in this graph. A change in affordability >100 indicates that, as a result of increasing income and/or decreasing price, alcohol has become more affordable. B, Barcelona; T, Turin.

doi:10.1371/journal.pmed.1001909.g011

in mortality, even without tackling the “upstream” causes of health inequalities. The evidence base shows that a range of alcohol control measures are cost-effective [68]. Although little is known about differential effectiveness by socioeconomic position [69], an informed guess is that a combination of different approaches will be necessary. Making alcohol more expensive has been shown to be the most cost-effective way to reduce alcohol-related harm, and will probably also work to reduce the inequality in alcohol-related mortality. Whatever the policies and interventions chosen, however, they should take into account cultural preferences regarding drinking and should include measures to control illegal trade and production.

Conclusions

Alcohol-related conditions play an important role in generating socioeconomic inequality in total mortality in many European countries. Countering increases in alcohol-related mortality in lower socioeconomic groups is essential for reducing inequalities in mortality. Studies of why such increases have not occurred in some countries, such as France, Switzerland, Spain, and Italy, can help in developing evidence-based policies in other European countries.

Supporting Information

S1 STROBE Checklist.
(DOC)

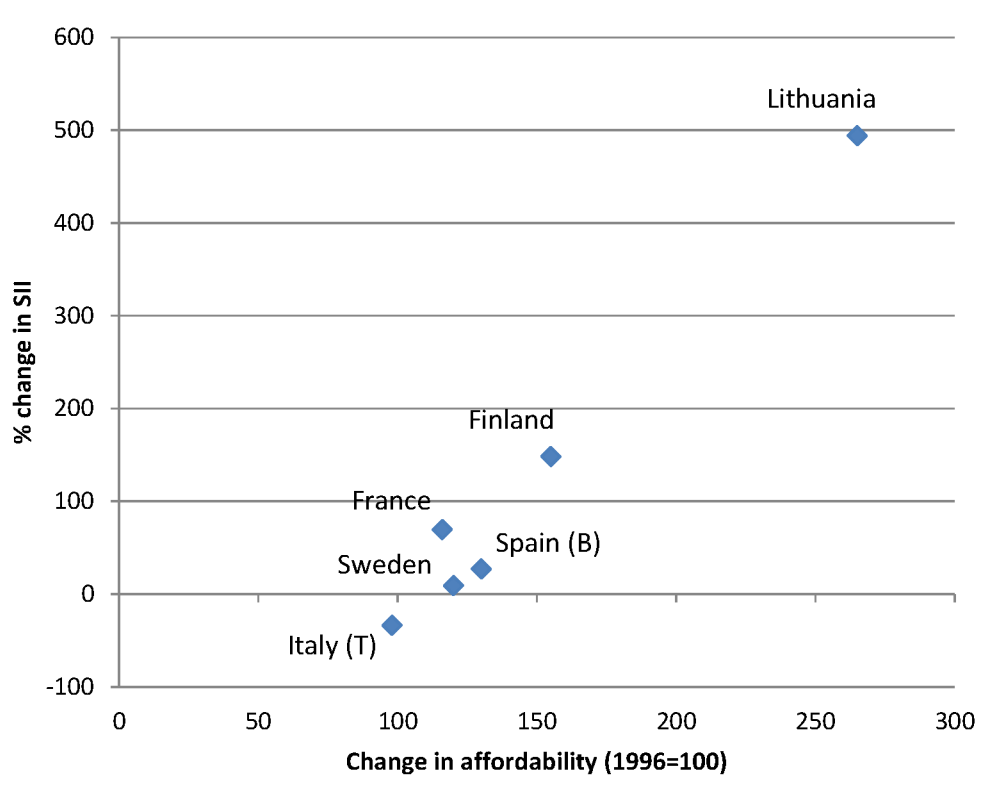


Fig 12. Change in alcohol affordability between 1996 and 2004 versus change in absolute inequality in alcohol-related mortality among women between ca. 1990–1994 and ca. 2005–2009. Data on affordability are from Rabinovich et al. [59] and give levels of affordability relative to that observed in 1996. Only countries with both data on affordability and data on SII for ca. 1990–1994 and ca. 2005–2009 are included in this graph. A change in affordability >100 indicates that, as a result of increasing income and/or decreasing price, alcohol has become more affordable. B, Barcelona; T, Turin.

doi:10.1371/journal.pmed.1001909.g012

S1 Fig. Trends in age-adjusted mortality from alcohol-related causes among men aged 35–64 y with non-manual occupations, ca. 1980–2010, by population.
(TIF)

S2 Fig. Trends in age-adjusted mortality from alcohol-related causes among men aged 35–64 y with manual occupations, ca. 1980–2010, by population.
(TIF)

S1 Table. Data sources: quantitative characteristics for latest observed period among men, by education level. For the time periods to which these data apply, see Table 2. Percentage population by education level was calculated among those with known education level.
(XLSX)

S2 Table. Data sources: quantitative characteristics for latest observed period among men, by occupational class. For the time periods to which these data apply, see Table 2. Percentage population by occupational class was calculated among those with known occupational class.
(XLSX)

S3 Table. Data sources: quantitative characteristics for latest observed period among women, by education level. For the time periods to which these data apply, see Table 2. Percentage population by education level was calculated among those with known education level.
(XLSX)

S4 Table. ICD code numbers.

(XLSX)

S5 Table. Age-adjusted rate ratio and rate difference for occupational class inequality in mortality from alcohol-related causes in the most recent observed period, by population, for men aged 35–64 y. RD, rate difference; RR, rate ratio.

(XLSX)

S6 Table. Trends in the rate ratio of relative occupational class inequality in mortality from alcohol-related causes, by population, for men aged 35–64 y. For Basque Country and Estonia, no data on occupational class inequality in mortality from alcohol-related causes were available for periods earlier than those presented in [S5 Table](#).

(XLSX)

S7 Table. Trends in the rate difference of absolute occupational class inequality in mortality from alcohol-related causes, by population, for men aged 35–64 y. For Basque Country and Estonia, no data on occupational class inequality in mortality from alcohol-related causes were available for periods earlier than those presented in [S5 Table](#).

(XLSX)

Acknowledgments

We thank the members of the DEMETRIQ consortium for their valuable comments and suggestions on a previous version of the manuscript. In addition to the authors, the following members of the DEMETRIQ consortium contributed to this study (in alphabetical order by country). Austria: Johannes Klotz, Statistics Austria, Vienna. Denmark: Jorn Korsbo Petersen, Statistics Denmark, Copenhagen. England and Wales: Office for National Statistics, Newport, Wales. Italy (Turin): Giuseppe Costa, Department of Clinical Medicine and Biology, University of Turin, Turin. Lithuania: Ramune Kalediene and Remigijus Prochorskas, Lithuanian University of Health Sciences, Kaunas. Norway: Bjørn Heine Strand, Division of Epidemiology, Norwegian Institute of Public Health, Oslo. Poland: Bogdan Wojtyniak, Department of Monitoring and Analyses of Population Health, National Institute of Public Health–National Institute of Hygiene, Warsaw. Scotland: Tom Clemens, Scottish Longitudinal Study Development and Support Unit, Edinburgh. Slovenia: Barbara Artnik, Department of Public Health, Faculty of Medicine, Ljubljana. Spain (Basque Country): Santiago Esnaola, Department of Public Health, Basque Government, Vitoria. Spain (Madrid): Enrique Regidor, Department of Preventive Medicine and Public Health, Universidad Complutense de Madrid, Madrid. Sweden: Olle Lundberg, Center for Health Equity Studies, Stockholm.

Author Contributions

Conceived and designed the experiments: JPM. Performed the experiments: JPM IK RdG. Analyzed the data: JPM IK CWNL RdG. Contributed reagents/materials/analysis tools: MB CB PD KK ML PMak PMar GM MR-S JR. Wrote the first draft of the manuscript: JPM. Contributed to the writing of the manuscript: JPM IK MB CB PD KK ML CWNL PMak PMar GM MR-S JR RdG. Agree with the manuscript's results and conclusions: JPM IK MB CB PD KK ML CWNL PMak PMar GM MR-S JR RdG. All authors have read, and confirm that they meet, ICMJE criteria for authorship.

References

1. Rehm J (2010) The risks associated with alcohol use and alcoholism. *Alcohol Res Health* 34: 135–143.
2. Rehm J, Baliunas D, Borges GL, Graham K, Irving H, et al. (2010) The relation between different dimensions of alcohol consumption and burden of disease: an overview. *Addiction* 105: 817–843. doi: [10.1111/j.1360-0443.2010.02899.x](https://doi.org/10.1111/j.1360-0443.2010.02899.x) PMID: [20331573](https://pubmed.ncbi.nlm.nih.gov/20331573/)
3. Bosetti C, Levi F, Lucchini F, Zatonski WA, Negri E, et al. (2007) Worldwide mortality from cirrhosis: an update to 2002. *J Hepatol* 46: 827–839. PMID: [17336419](https://pubmed.ncbi.nlm.nih.gov/17336419/)
4. Zatonski WA, Sulkowska U, Manczuk M, Rehm J, Boffetta P, et al. (2010) Liver cirrhosis mortality in Europe, with special attention to Central and Eastern Europe. *Eur Addict Res* 16: 193–201. doi: [10.1159/000317248](https://doi.org/10.1159/000317248) PMID: [20606444](https://pubmed.ncbi.nlm.nih.gov/20606444/)
5. Leon DA, McCambridge J (2006) Liver cirrhosis mortality rates in Britain from 1950 to 2002: an analysis of routine data. *Lancet* 367: 52–56. PMID: [16399153](https://pubmed.ncbi.nlm.nih.gov/16399153/)
6. Munoz-Prez F, Nizard A (1999) Alcohol consumption and cirrhosis mortality in the industrialised countries since 1950. *Eur J Popul* 14: 367–386.
7. Bloomfield K, Grittner U, Kramer S, Gmel G (2006) Social inequalities in alcohol consumption and alcohol-related problems in the study countries of the EU concerted action 'Gender, Culture and Alcohol Problems: a Multi-national Study'. *Alcohol Alcohol Suppl* 41: i26–i36. PMID: [17030500](https://pubmed.ncbi.nlm.nih.gov/17030500/)
8. Ramstedt M (2002) Alcohol-related mortality in 15 European countries in the postwar period. In: Norstrom T, editor. *Alcohol in postwar Europe: consumption, drinking patterns, consequences and policy responses in 15 European countries*. Stockholm: National Institute of Public Health.
9. Stickley A, Leinsalu M, Andreev E, Razvodovsky Y, Vagero D, et al. (2007) Alcohol poisoning in Russia and the countries in the European part of the former Soviet Union, 1970–2002. *Eur J Public Health* 17: 444–449. PMID: [17327281](https://pubmed.ncbi.nlm.nih.gov/17327281/)
10. Kuntsche E, Rehm J, Gmel G (2004) Characteristics of binge drinkers in Europe. *Soc Sci Med* 59: 113–127. PMID: [15087148](https://pubmed.ncbi.nlm.nih.gov/15087148/)
11. Probst C, Roerecke M, Behrendt S, Rehm J (2014) Gender differences in socioeconomic inequality of alcohol-attributable mortality: A systematic review and meta-analysis. *Drug Alcohol Rev* 34: 267–277. doi: [10.1111/dar.12184](https://doi.org/10.1111/dar.12184) PMID: [25109218](https://pubmed.ncbi.nlm.nih.gov/25109218/)
12. Probst C, Roerecke M, Behrendt S, Rehm J (2014) Socioeconomic differences in alcohol-attributable mortality compared with all-cause mortality: a systematic review and meta-analysis. *Int J Epidemiol* 43: 1314–1327. doi: [10.1093/ije/dyu043](https://doi.org/10.1093/ije/dyu043) PMID: [24618188](https://pubmed.ncbi.nlm.nih.gov/24618188/)
13. Mäkelä P (1999) Alcohol-related mortality as a function of socio-economic status. *Addiction* 94: 867–886. PMID: [10665076](https://pubmed.ncbi.nlm.nih.gov/10665076/)
14. Hemström O (2002) Alcohol-related deaths contribute to socioeconomic differentials in mortality in Sweden. *Eur J Public Health* 12: 254–262. PMID: [12506500](https://pubmed.ncbi.nlm.nih.gov/12506500/)
15. Norström T, Romelsjö A (1998) Social class, drinking and alcohol-related mortality. *J Subst Abuse* 10: 385–395. PMID: [10897291](https://pubmed.ncbi.nlm.nih.gov/10897291/)
16. Metcalfe C, Davey Smith G, Sterne JA, Heslop P, Macleod J, et al. (2005) Cause-specific hospital admission and mortality among working men: association with socioeconomic circumstances in childhood and adult life, and the mediating role of daily stress. *Eur J Public Health* 15: 238–244. PMID: [15923212](https://pubmed.ncbi.nlm.nih.gov/15923212/)
17. Harrison L, Gardiner E (1999) Do the rich really die young? Alcohol-related mortality and social class in Great Britain, 1988–94. *Addiction* 94: 1871–1880. PMID: [10717965](https://pubmed.ncbi.nlm.nih.gov/10717965/)
18. Leinsalu M, Vägerö D, Kunst AE (2003) Estonia 1989–2000: enormous increase in mortality differences by education. *Int J Epidemiol* 32: 1081–1087. PMID: [14681279](https://pubmed.ncbi.nlm.nih.gov/14681279/)
19. Herttua K, Mäkelä P, Martikainen P (2007) Differential trends in alcohol-related mortality: a register-based follow-up study in Finland in 1987–2003. *Alcohol Alcohol* 42: 456–464. PMID: [17277324](https://pubmed.ncbi.nlm.nih.gov/17277324/)
20. Martikainen P, Valkonen T, Martelin T (2001) Change in male and female life expectancy by social class: decomposition by age and cause of death in Finland 1971–95. *J Epidemiol Community Health* 55: 494–499. PMID: [11413179](https://pubmed.ncbi.nlm.nih.gov/11413179/)
21. Martikainen P, Mäkelä P, Peltonen R, Myrskylä M (2014) Income differences in life expectancy: the changing contribution of harmful consumption of alcohol and smoking. *Epidemiology* 25: 182–190. doi: [10.1097/EDE.000000000000064](https://doi.org/10.1097/EDE.000000000000064) PMID: [24487202](https://pubmed.ncbi.nlm.nih.gov/24487202/)
22. Herttua K, Mäkelä P, Martikainen P (2008) Changes in alcohol-related mortality and its socioeconomic differences after a large reduction in alcohol prices: a natural experiment based on register data. *Am J Epidemiol* 168: 1110–1118. doi: [10.1093/aje/kwn216](https://doi.org/10.1093/aje/kwn216) PMID: [18718894](https://pubmed.ncbi.nlm.nih.gov/18718894/)

23. Herttua K, Mäkelä P, Martikainen P (2013) Minimum prices of alcohol and educational disparities in alcohol-related mortality: a time-series analysis [abstract]. 6th European Public Health Conference; 13–16 Nov 2013; Brussels, Belgium.
24. Najman JM, Williams GM, Room R (2007) Increasing socioeconomic inequalities in male cirrhosis of the liver mortality: Australia 1981–2002. *Drug Alcohol Rev* 26: 273–278. PMID: [17454016](#)
25. Federico B, Mackenbach JP, Eikemo TA, Sebastiani G, Marinacci C, et al. (2013) Educational inequalities in mortality in northern, mid and southern Italy and the contribution of smoking. *J Epidemiol Community Health* 67: 603–609. doi: [10.1136/jech-2012-201716](#) PMID: [23596251](#)
26. Marinacci C, Grippo F, Pappagallo M, Sebastiani G, Demaria M, et al. (2013) Social inequalities in total and cause-specific mortality of a sample of the Italian population, from 1999 to 2007. *Eur J Public Health* 23: 582–587. doi: [10.1093/eurpub/cks184](#) PMID: [23302766](#)
27. Regidor E, Kunst AE, Rodriguez-Artalejo F, Mackenbach JP (2012) Small socio-economic differences in mortality in Spanish older people. *Eur J Public Health* 22: 80–85. doi: [10.1093/eurpub/ckr051](#) PMID: [21531772](#)
28. United Nations Educational, Scientific and Cultural Organization (1997) International Standard Classification of Education–ISCED 1997. Paris: United Nations Educational, Scientific and Cultural Organization.
29. Erikson E, Goldthorpe JH (1992) The constant flux. Oxford: Clarendon Press.
30. Kunst AE, Groenhouf F, Mackenbach JP (1998) Mortality by occupational class among men 30–64 years in 11 European countries. EU Working Group on Socioeconomic Inequalities in Health. *Soc Sci Med* 46: 1459–1476. PMID: [9665576](#)
31. Ahmad O, Boschi-Pinto C, Lopez A, Murray C, Lozano R, et al. (2001) Age standardization of rates: a new WHO standard. GPE Discussion Paper Series No. 31. Geneva: World Health Organization.
32. Mäkelä P, Gmel G, Grittner U, Kuendig H, Kuntsche S, et al. (2006) Drinking patterns and their gender differences in Europe. *Alcohol Alcohol Suppl* 41: i8–i18. PMID: [17030504](#)
33. Harper S, King NB, Meersman SC, Reichman ME, Breen N, et al. (2010) Implicit value judgments in the measurement of health inequalities. *Milbank Q* 88: 4–29. doi: [10.1111/j.1468-0009.2010.00587.x](#) PMID: [20377756](#)
34. Mackenbach JP (2015) Should we aim to reduce relative or absolute inequalities in mortality? *Eur J Public Health* 25: 185. doi: [10.1093/eurpub/cku217](#) PMID: [25818489](#)
35. Mackenbach JP, Kunst AE (1997) Measuring the magnitude of socio-economic inequalities in health: an overview of available measures illustrated with two examples from Europe. *Soc Sci Med* 44: 757–771. PMID: [9080560](#)
36. Regidor E (2004) Measures of health inequalities: part 2. *J Epidemiol Community Health* 58: 900–903. PMID: [15483304](#)
37. Mackenbach JP, Stirbu I, Roskam AJ, Schaap MM, Menvielle G, et al. (2008) Socioeconomic inequalities in health in 22 European countries. *N Engl J Med* 358: 2468–2481. doi: [10.1056/NEJMsa0707519](#) PMID: [18525043](#)
38. Sergeant JC, Firth D (2006) Relative index of inequality: definition, estimation, and inference. *Biostatistics* 7: 213–224. PMID: [16192414](#)
39. Bell G, Cremona A (1987) Alcohol and death certification: a survey of current practice and attitudes. *Br Med J (Clin Res Ed)* 295: 95.
40. Ramstedt M (2003) Alcohol consumption and liver cirrhosis mortality with and without mention of alcohol—the case of Canada. *Addiction* 98: 1267–1276. PMID: [12930214](#)
41. Jozan P (1987) Some features of mortality in Hungary in the post-war period: the third stage of epidemiologic transition in promoting health in Hungary. Report of a group established by the Council of Ministers of the Hungarian People's Republic. Budapest: Central Statistical Office.
42. Lim SS, Vos T, Flaxman AD, Danaei G, Shibuya K, et al. (2012) A comparative risk assessment of burden of disease and injury attributable to 67 risk factors and risk factor clusters in 21 regions, 1990–2010: a systematic analysis for the Global Burden of Disease Study 2010. *Lancet* 380: 2224–2260. doi: [10.1016/S0140-6736\(12\)61766-8](#) PMID: [23245609](#)
43. Rehm J, Mathers C, Popova S, Thavorncharoensap M, Teerawattananon Y, et al. (2009) Global burden of disease and injury and economic cost attributable to alcohol use and alcohol-use disorders. *Lancet* 373: 2223–2233. doi: [10.1016/S0140-6736\(09\)60746-7](#) PMID: [19560604](#)
44. Droomers M, Schrijvers C, Stronks K, van de Mheen D, Mackenbach JP (1999) Educational differences in excessive alcohol consumption: the role of psychosocial and material stressors. *Prev Med* 29: 1–10. PMID: [10419792](#)

45. de Goeij MC, Suhrcke M, Toffolutti V, van de Mheen D, Schoenmakers TM, et al. (2015) How economic crises affect alcohol consumption and alcohol-related health problems: a realist systematic review. *Soc Sci Med* 131: 131–146. doi: [10.1016/j.socscimed.2015.02.025](https://doi.org/10.1016/j.socscimed.2015.02.025) PMID: [25771482](https://pubmed.ncbi.nlm.nih.gov/25771482/)
46. Petrovski BE, Szeles G, Melles M, Pataki V, Kardos L, et al. (2011) Behaviour does not fully explain the high risk of chronic liver disease in less educated men in Hungary. *Eur J Public Health* 21: 662–666. doi: [10.1093/eurpub/ckq079](https://doi.org/10.1093/eurpub/ckq079) PMID: [20551046](https://pubmed.ncbi.nlm.nih.gov/20551046/)
47. Popova S, Rehm J, Patra J, Zatonski W (2007) Comparing alcohol consumption in central and eastern Europe to other European countries. *Alcohol Alcohol* 42: 465–473. PMID: [17287207](https://pubmed.ncbi.nlm.nih.gov/17287207/)
48. Szucs S, Sarvary A, McKee M, Adany R (2005) Could the high level of cirrhosis in central and eastern Europe be due partly to the quality of alcohol consumed? An exploratory investigation. *Addiction* 100: 536–542. PMID: [15784068](https://pubmed.ncbi.nlm.nih.gov/15784068/)
49. Lang K, Vali M, Szucs S, Adany R, McKee M (2006) The composition of surrogate and illegal alcohol products in Estonia. *Alcohol Alcohol* 41: 446–450. PMID: [16687467](https://pubmed.ncbi.nlm.nih.gov/16687467/)
50. Mäkelä P, Paljärvi T (2008) Do consequences of a given pattern of drinking vary by socioeconomic status? A mortality and hospitalisation follow-up for alcohol-related causes of the Finnish Drinking Habits Surveys. *J Epidemiol Community Health* 62: 728–733. doi: [10.1136/jech.2007.065672](https://doi.org/10.1136/jech.2007.065672) PMID: [18621959](https://pubmed.ncbi.nlm.nih.gov/18621959/)
51. World Health Organization. Global information system on alcohol and health. Geneva: World Health Organization.
52. Thun MJ, Peto R, Lopez AD, Monaco JH, Henley SJ, et al. (1997) Alcohol consumption and mortality among middle-aged and elderly U.S. adults. *N Engl J Med* 337: 1705–1714. PMID: [9392695](https://pubmed.ncbi.nlm.nih.gov/9392695/)
53. Norström T, editor (2002) Alcohol in postwar Europe: consumption, drinking patterns, consequences and policy responses in 15 European countries. Stockholm: National Institute of Public Health.
54. Simpura J (1998) Mediterranean mysteries: mechanisms of declining alcohol consumption. *Addiction* 93: 1301–1304. PMID: [9926536](https://pubmed.ncbi.nlm.nih.gov/9926536/)
55. Gual A, Colom J (1997) Why has alcohol consumption declined in countries of southern Europe? *Addiction* 92 (Suppl 1): S21–S31. PMID: [9167284](https://pubmed.ncbi.nlm.nih.gov/9167284/)
56. Sulkunen P (1989) Drinking in France 1965–1979. An analysis of household consumption data. *Br J Addict* 84: 61–72. PMID: [2783870](https://pubmed.ncbi.nlm.nih.gov/2783870/)
57. Karlsson K, Österberg E (2007) Scaling alcohol control policies across Europe. Eurocare Bridging the Gap Project. Brussels: Eurocare.
58. Townsend J, Roderick P, Cooper J (1994) Cigarette smoking by socioeconomic group, sex, and age: effects of price, income, and health publicity. *BMJ* 309: 923–927. PMID: [7950662](https://pubmed.ncbi.nlm.nih.gov/7950662/)
59. Rabinovich L, Brutscher P-B, de Vries H, Tiessen J, Clift J, et al. (2009) The affordability of alcoholic beverages in the European Union: understanding the link between alcohol affordability, consumption and harms. Santa Monica (California): RAND.
60. Zatonski W (2002) Democracy is healthier. A health miracle on the Vistula. Warsaw: Cancer Center and Institute of Oncology.
61. Leon DA, Chenet L, Shkolnikov VM, Zakharov S, Shapiro J, et al. (1997) Huge variation in Russian mortality rates 1984–94: artefact, alcohol, or what? *Lancet* 350: 383–388. PMID: [9259651](https://pubmed.ncbi.nlm.nih.gov/9259651/)
62. Stuckler D, King L, McKee M (2009) Mass privatisation and the post-communist mortality crisis: a cross-national analysis. *Lancet* 373: 399–407. doi: [10.1016/S0140-6736\(09\)60005-2](https://doi.org/10.1016/S0140-6736(09)60005-2) PMID: [19150132](https://pubmed.ncbi.nlm.nih.gov/19150132/)
63. Moskalewicz J, Simpura J (2000) The supply of alcoholic beverages in transitional conditions: the case of Central and Eastern Europe. *Addiction* 95 (Suppl 4): S505–S522. PMID: [11218348](https://pubmed.ncbi.nlm.nih.gov/11218348/)
64. Reitan TC (2000) Does alcohol matter—public health in Russia and the Baltic countries before, during, and after the transition. *Contemp Drug Probl* 27: 511–560.
65. Lai T, Habicht J (2011) Decline in alcohol consumption in Estonia: combined effects of strengthened alcohol policy and economic downturn. *Alcohol Alcohol* 46: 200–203. doi: [10.1093/alcalc/agr001](https://doi.org/10.1093/alcalc/agr001) PMID: [21273300](https://pubmed.ncbi.nlm.nih.gov/21273300/)
66. Commission on Social Determinants of Health (2008) Closing the gap in a generation. Health equity through the social determinants of health. Geneva: World Health Organization.
67. Link BG, Phelan J (1995) Social conditions as fundamental causes of disease. *J Health Soc Behav Spec No*: 80–94.
68. Anderson P, Chisholm D, Fuhr DC (2009) Effectiveness and cost-effectiveness of policies and programmes to reduce the harm caused by alcohol. *Lancet* 373: 2234–2246. doi: [10.1016/S0140-6736\(09\)60744-3](https://doi.org/10.1016/S0140-6736(09)60744-3) PMID: [19560605](https://pubmed.ncbi.nlm.nih.gov/19560605/)

69. Jepson RG, Harris FM, Platt S, Tannahill C (2010) The effectiveness of interventions to change six health behaviours: a review of reviews. *BMC Public Health* 10: 538. doi: [10.1186/1471-2458-10-538](https://doi.org/10.1186/1471-2458-10-538)
PMID: [20825660](https://pubmed.ncbi.nlm.nih.gov/20825660/)

Editors' Summary

Background

People have consumed alcoholic beverages throughout history, but, globally, about three million people die from alcohol-related causes every year. Alcohol consumption, particularly in higher amounts, is a risk factor for cardiovascular disease (diseases of the heart and/or blood vessels), liver cirrhosis (scarring of the liver), injuries, and many other fatal and nonfatal health problems. Alcohol also affects the well-being and health of people around those who drink, through alcohol-related crime and road traffic crashes. The impact of alcohol use on health depends on the amount of alcohol consumed and on the pattern of drinking. Most guidelines on alcohol consumption recommend that men should regularly consume no more than two alcoholic drinks per day and that women should regularly consume no more than one drink per day (a “drink” is, roughly speaking, a can of beer or a small glass of wine). The guidelines also advise people to avoid binge drinking—the consumption of five or more drinks on a single occasion for men or four or more drinks on a single occasion for women.

Why Was This Study Done?

Like many other behaviors that affect health, alcohol consumption is affected by socioeconomic status (an individual's economic and social position in relation to others based on income, level of education, and occupation). Thus, in many European countries, the frequency of drinking and the levels of alcohol consumption are greater in higher socioeconomic groups than in lower socioeconomic groups, whereas binge drinking and other problematic forms of alcohol consumption occur more frequently in lower socioeconomic groups. Importantly, higher levels of mortality (death) from alcohol-related conditions have been documented in lower socioeconomic groups than in higher socioeconomic groups in several European countries. Here, the researchers analyze mortality registers to find out whether the magnitude of socioeconomic inequalities in alcohol-related mortality differs among European countries and whether these inequalities have changed over time. Documenting these differences and changes is important because it may help to explain socioeconomic inequalities in alcohol-related mortality and thus inform policies and interventions designed to reduce alcohol-related harm and socioeconomic inequalities in mortality.

What Did the Researchers Do and Find?

The researchers obtained data on deaths from alcoholic psychosis, dependence, and abuse; alcoholic cardiomyopathy (a type of heart disease); alcoholic liver cirrhosis; and accidental alcohol poisoning from the mortality registers of 17 European countries. Using available data on educational level and occupational class, they calculated relative and absolute socioeconomic inequalities in alcohol-related mortality (relative inequality reflects mortality differences between socioeconomic groups in terms of a proportion or percentage; absolute inequality reflects mortality differences between groups in terms of deaths per 100,000 person-years). Rates of alcohol-related mortality were higher in individuals with less education or with manual (as opposed to non-manual) occupations in all 17 countries. Both relative and absolute inequalities were largest in Eastern Europe but Finland and Denmark also had very large absolute inequalities in alcohol-related mortality. For

example, among Finnish men, those with the lowest level of education were 3.6 times more likely to die from an alcohol-related cause than those with the highest level of education, and there were 112.5 more deaths per 100,000 person-years among those with the lowest level of education than among those with the highest level of education. The relative inequality in alcohol-related mortality increased over time in many countries. Moreover, the absolute inequality increased markedly in Hungary, Lithuania, Estonia, Finland, and Denmark because of a rapid rise in alcohol-related mortality in lower socioeconomic groups. By contrast, mortality from alcohol-related causes among lower educated men was stable in France, Switzerland, Spain, and Italy.

What Do These Findings Mean?

These findings suggest that alcohol-related conditions are an important contributing factor to the socioeconomic inequality in total mortality in many European countries. Indeed, in some countries (for example, Finland), alcohol-related causes account for 10% or more of the socioeconomic inequality in total mortality among men. The accuracy of these findings is likely to be affected by the use of routinely collected underlying causes of death and by other aspects of the study design. Importantly, however, these findings indicate that to reduce socioeconomic inequalities in mortality, health professionals and governments need to introduce interventions and policies designed to counter recent increases in alcohol-related mortality in lower socioeconomic groups. Further investigation of why such increases have not occurred in some countries may help in the design of these important public health initiatives.

Additional Information

This list of resources contains links that can be accessed when viewing the PDF on a device or via the online version of the article at <http://dx.doi.org/10.1371/journal.pmed.1001909>.

- The World Health Organization provides detailed information about [alcohol](#), including a [fact sheet on the harmful use of alcohol](#); its [Global Status Report on Alcohol and Health 2014](#) provides country profiles for alcohol consumption, information on the impact of alcohol use on health, and policy responses; the [Global Information System on Alcohol and Health](#) provides further information about alcohol, including information on control policies around the world
- The [US National Institute on Alcohol Abuse and Alcoholism](#) has information about [alcohol and its effects on health](#); it provides [interactive worksheets](#) to help people evaluate their drinking and decide whether and how to make a change
- The US Centers for Disease Control and Prevention provides information on [alcohol and public health](#)
- The UK National Health Service Choices website provides detailed information about [drinking and alcohol](#), including information on the [risks of drinking too much](#), [tools for calculating alcohol consumption](#), and personal stories about alcohol use problems
- MedlinePlus provides links to many other resources on [alcohol](#)