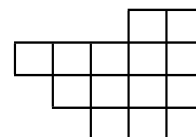


1149 Budapest, Angol u. 77.

Phone: (36 1)251 0288, (36 1)384 3167

Fax: (36 1)383 3111

- A County
- B Area code
- C Address code
- D Number of interviewer



Date of interview: day month

Participation is voluntary!

TURNING POINTS OF THE LIFE-COURSE

(Social, demographic panel survey)
WAVE 1



November 2001 – January 2002

5. I would like to ask a few things about your marriage (marriages).

IF THE RESPONDENT HAS HAD MORE THAN 5 MARRIAGES, THEN THE FIRST FOUR ARE CODED AND THE FIFTH ONE IS THE LAST ONE!

CODE IN THE TABLE!

Marriage number	When did you get married? (DATE)		Did you live together with your spouse before marriage, if so, for how long? (DURATION)			Does this marriage still exist? 1 – exists 2 – widowed 3 – divorced	Date of death of spouse, divorce (DATE)	
	year	month	1 – yes 0 – no	years	months		year	month
1	k1haz1ev	k1haz1ho	k1haz1e1	k1haz1ee	k1haz1eh	k1haz1fe	k1haz1be	k1haz1bh
2	k1haz2ev	k1haz2ho	k1haz2e1	k1haz2ee	k1haz2eh	k1haz2fe	k1haz2be	k1haz2bh
3	k1haz3ev	k1haz3ho	k1haz3e1	k1haz3ee	k1haz3eh	k1haz3fe	k1haz3be	k1haz3bh
4	k1haz4ev	k1haz4ho	k1haz4e1	k1haz4ee	k1haz4eh	k1haz4fe	k1haz4be	k1haz4bh
5	k1haz5ev	k1haz5ho	k1haz5e1	–	–	k1haz5fe	k1haz5be	k1haz5bh

ASK EVERYONE!

6. Have you ever cohabited with someone for at least three months without eventually marrying?
(Do not include your present cohabiting partnership.)

1 – yes → How many such partnerships have you had: partnerships

2 – no → GO TO 7

REGISTER THREE: THE FIRST ONE AND TWO OTHERS OF SIGNIFICANCE FOR THE RESPONDENT!

CODE IN THE TABLE!

	The partnership			
	began		ended	
	year	month	year	month
First cohabiting partnership	k1eta1ke	k1eta1kh	k1eta1ve	k1eta1vh
Other cohabiting partnership	k1eta2ke	k1eta2kh	k1eta2ve	k1eta2vh
Other cohabiting partnership	k1eta3ke	k1eta3kh	k1eta3ve	k1eta3vh

8 – DOES NOT WISH TO ANSWER

7. Now I am asking you about the household you live in now or in which you spend most of your time. Is this...

1 – a private household, or → GO TO 11
 2 – an institutional household (student hostel, hostel for nurses or workers, army, elders' home etc.)?

8. How many of you live in the same room?

persons

IF TWO PEOPLE LIVE IN THE SAME ROOM!**9. The person you live with is your...**

- 1 – spouse or
 2 – cohabiting partner or partner?

 3 – neither

10. Is there a private household in which you also live regularly?

- 1 – yes
 2 – no _____ → **GO TO 13**

Now we ask you about this household:

11. Including you, how many people live in this household? (including students in hostel, men on military service, weekly commuters)

persons

Please give a few data on these persons:

CODE IN THE TABLE!

	Who is he/she? How is he/she related to you? CODE:	Sex: 1 – male 2 – female	Date of birth		What is his/her main activity? CODE:
			year	month	
Respondent					
Household member 2	k1h2rok	k1h2nem	k1h2szez	k1h2szho	k1h2ak
Household member 3	k1h3rok	k1h3nem	k1h3szez	k1h3szho	k1h3ak
Household member 4	k1h4rok	k1h4nem	k1h4szez	k1h4szho	k1h4ak
Household member 5	k1h5rok	k1h5nem	k1h5szez	k1h5szho	k1h5ak
Household member 6	k1h6rok	k1h6nem	k1h6szez	k1h6szho	k1h6ak
Household member 7	k1h7rok	k1h7nem	k1h7szez	k1h7szho	k1h7ak
Household member 8	k1h8rok	k1h8nem	k1h8szez	k1h8szho	k1h8ak
Household member 9	k1h9rok	k1h9nem	k1h9szez	k1h9szho	k1h9ak
Household member 10	k1h10rok	k1h10nem	k1h10szez	k1h10szho	k1h10ak
Household member 11	k1h11rok	k1h11nem	k1h11szez	k1h11szho	k1h11ak
Household member 12	k1h12rok	k1h12nem	k1h12szez	k1h12szho	k1h12ak
Household member 13	k1h13rok	k1h13nem	k1h13szez	k1h13szho	k1h13ak

↓

RELATIONSHIP CODES:

- | | |
|--|---|
| 1 – spouse
2 – cohabiting partner
3 – own child
4 – child from earlier relationship of spouse/cohabiting partner
5 – adopted child
6 – other related child
7 – parent
8 – mother-, father-in-law (also for partner) | 9 – spouse, partner of child (daughter-, son-in-law)
10 – grandchild
11 – sibling
12 – half-, stepsibling
13 – stepparent
14 – grandparent
15 – other relative
16 – non-relative |
|--|---|

↙

ACTIVITY CODES

- | |
|---|
| 1 – employed
2 – self-employed
3 – co-operative member
4 – unemployed
5 – child-care leave
6 – pensioner
7 – homemaker
8 – student, pupil, pre-schooler or child under school age
9 – other |
|---|

12. Are there any members of this household, including you, who are typically absent for at least three days a week? If so, what do they do, where do they live when absent?

1 – yes
2 – no

GO TO 13

IF YES, INDICATE THE NUMBER OF THIS HOUSEHOLD MEMBER FROM TABLE AT QUESTION 11, THEN CODE THE CAUSE OF ABSENCE!

No. of household member	k1tav1sz	Cause of absence:	k1tav1ok
No. of household member	k1tav2sz	Cause of absence:	k1tav2ok
No. of household member	k1tav3sz	Cause of absence:	k1tav3ok

CAUSE OF ABSENCE

01 – lives in students' hostel	08 – lives with parent
02 – lives in rented room	09 – is in a penal institute
03 – has another apartment	10 – is in a reformatory
04 – lives in workers', nurses' hostel	11 – is in hospital, nursing home
05 – lives with other relative	12 – is in a home for the elderly
06 – is on military service	13 – is abroad
07 – stays with the other parent (if the parents live apart)	14 – is elsewhere

13. Have you given birth to or fathered any children not living in your household at present?

1 – yes

13a. How many such children have you had? children

2 – no

GO TO 14

Please give some data on them too!

CODE IN THE TABLE!

	Date of birth		Sex: 1 – male 2 – female	When did you stop living together?		Where does the child live now? 1 – in this settlement 2 – elsewhere in the country 3 – abroad 4 – deceased	IF DECEASED When?	
	year	month		year	month		year	month
Child 1	k1g1sze	k1g1szho	k1g1nem	k1g1kev	k1g1kho	k1g1hol	k1g1hev	k1g1hho
Child 2	k1g2sze	k1g2szho	k1g2nem	k1g2kev	k1g2kho	k1g2hol	k1g2hev	k1g2hho
Child 3	k1g3sze	k1g3szho	k1g3nem	k1g3kev	k1g3kho	k1g3hol	k1g3hev	k1g3hho
Child 4	k1g4sze	k1g4szho	k1g4nem	k1g4kev	k1g4kho	k1g4hol	k1g4hev	k1g4hho
Child 5	k1g5sze	k1g5szho	k1g5nem	k1g5kev	k1g5kho	k1g5hol	k1g5hev	k1g5hho
Child 6	k1g6sze	k1g6szho	k1g6nem	k1g6kev	k1g6kho	k1g6hol	k1g6hev	k1g6hho
Child 7	k1g7sze	k1g7szho	k1g7nem	k1g7kev	k1g7kho	k1g7hol	k1g7hev	k1g7hho
Child 8	k1g8sze	k1g8szho	k1g8nem	k1g8kev	k1g8kho	k1g8hol	–	–
Child 9	k1g9sze	k1g9szho	k1g9nem	k1g9kev	k1g9kho	k1g9hol	–	–
Child 10	k1g10sze	k1g10szho	k1g10nem	k1g10kev	k1g10kho	k1g10hol	–	–
Child 11	k1g11sze	k1g11szho	k1g11nem	k1g11kev	k1g11kho	k1g11hol	–	–

QUESTIONS 20-21: IF RESPONDENT WORKS OR WORKS AS A PENSIONER!

20. Are you planning to change your work or workplace in the next 3 years?
If you have more than one workplace, answer for the main one.

1 – yes → 20a. Why?

2 – no → 20b. Why not?
9 – DK

MULTIPLE ANSWERS ARE ALLOWED!

<p>01 – would like to earn more 02 – would like a job closer to home 03 – needs a job that can be harmonised better with family commitments 04 – does not like present work 05 – would like shorter working hours 06 – would like more free time 07 – does not get on well with fellow workers, colleagues 08 – would like a second job 09 – looks for better working conditions 10 – to promote professional development, career 11 – other 99 – DK</p>	<p>01 – good career opportunities in present workplace 02 – no chance of finding work elsewhere 03 – likes the work 04 – workplace is close 05 – work schedule fits in well with family tasks 06 – likes fellow workers, colleagues 07 – has a lot of free time 08 – works to own schedule, independent 09 – other 99 – DK</p>
--	--

21. Do you also do any other paid activity?

- _____
- 1 – yes
 - 2 – no

AFTER THE ANSWER GO TO 23!

QUESTION 22: IF THE RESPONDENT DOES NOT WORK!

22. Are you planning to take a job in the future?

- 1 – yes, looking for work at present, and if a suitable job is found, would start next week,
- 2 – intends to take a job, but only in the more distant future, or
- 3 – not planning to take a job in the future

9 – DK

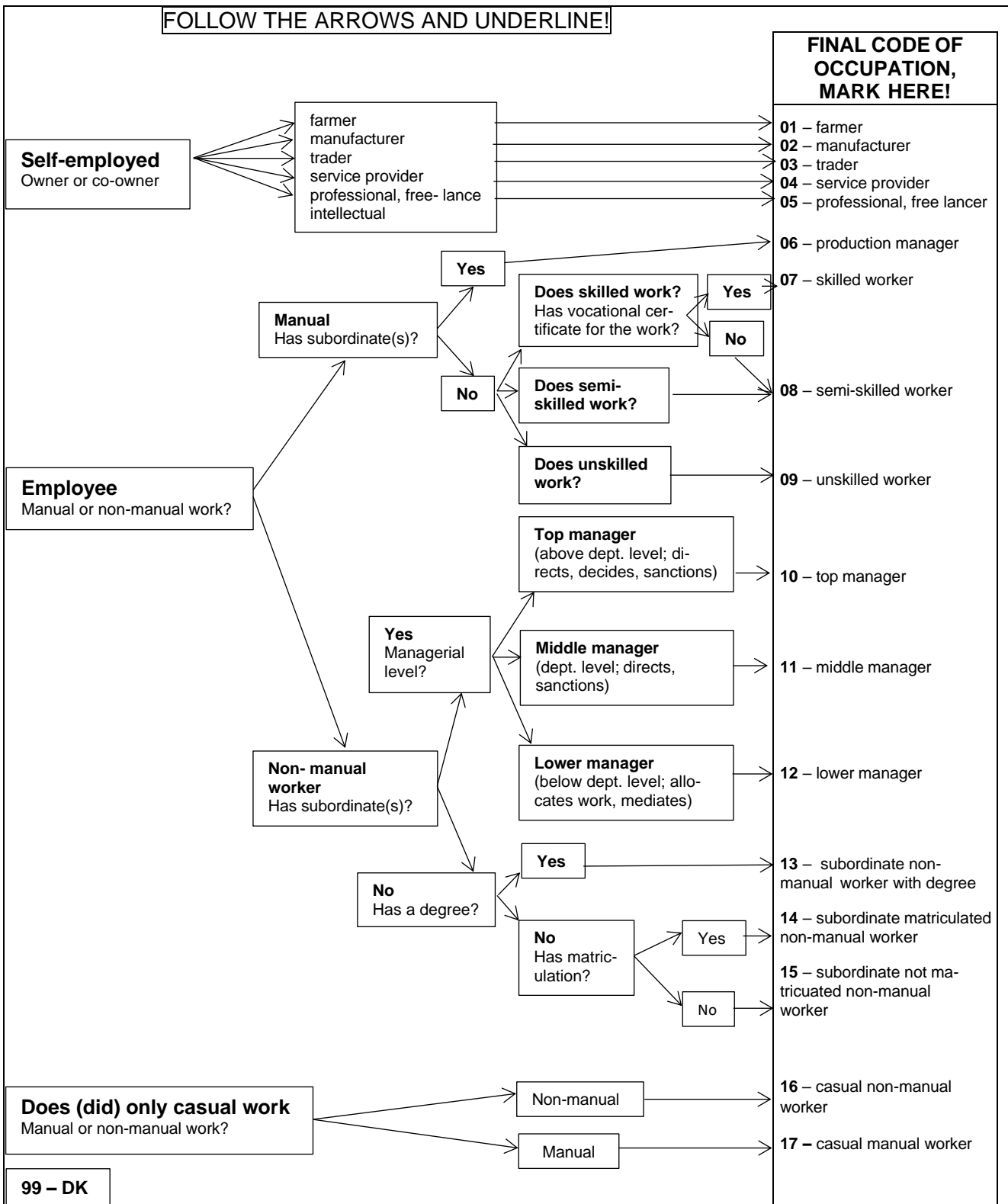
ASK EVERYONE!

23. What is (was) your (last) occupation? If you have (had) more than one, answer for the main one!

IF PENSIONER OR ON CHILD-CARE LEAVE AND WORKS: LAST OCCUPATION BEFORE RETIREMENT OR LEAVE!

0000 – NEVER WORKED → **GO TO 30!**

23/a. Do (did) you do this work as self-employed or as an employee?



IF SELF-EMPLOYED, MANAGER (codes 01-06, 10-12 on the previous page):

24. How many employees, subordinates do (did) you have?

persons

8888 – no employee / subordinate
9999 – DK

QUESTIONS 25-27: ONLY IF RESPONDENT WORKS (code 1 for question 19):

25. Your workplace, the business or organization where you work:

- 1 – is fully owned by the state or the local government
- 2 – is only partly owned by the state or the local government
- 3 – has no state or local government ownership

9 – DK

26. How many hours did you work last week? Consider only income-earning activities!

hours

99 – DK

27. Please use **CARD NO. 1** to indicate how satisfied you are with your work. 0 means that you are not satisfied at all and 10 means that you are completely satisfied.

Scale value:

99 – DK

ASK EVERYONE WHO HAS EVER WORKED!

28. How old were you when you began regular paid work?

years old

99 – DK

29. Have you ever been unemployed?

IF RESPONDENT ASKS: FOR AT LEAST 3 MONTHS

- 1 – was unemployed once
- 2 – was unemployed more than once
- 3 – has not been unemployed

→ 29a. For how long altogether? months

30-34. ONLY IF RESPONDENT HAS SPOUSE OR COHABITING PARTNER. (Q 2 code 2 or Q 3 code 1)

30. What is the highest level of completed schooling of your spouse/cohabiting partner?

IN THE CASE OF SEVERAL QUALIFICATIONS, ENTER THE CODE OF THE HIGHEST!

- 1 – did not go to school
- 2 – less than 8 years of primary school
- 3 – 8 years of primary school (4 + 4 system also)
- 4 – vocational school (trade school, apprenticeship)
- 5 – vocational secondary school with matriculation, post-secondary vocational education
- 6 – general secondary school with matriculation
- 7 – post-secondary higher vocational education but not college
- 8 – college degree, higher vocational training
- 9 – university degree

31. Does your spouse/cohabiting partner currently work or do some form of paid activity?

1 – yes



31a. How, in what form?

IF MORE THAN ONE APPLIES, CHOOSE THE MOST IMPORTANT ONE!

- 1 – employed on a permanent basis
- 2 – employed with fixed-term contract
- 3 – independent, entrepreneur, self-employed owner
- 4 – member of a company
- 5 – works for pay while on pension
(including part-time, casual work etc.)
- 6 – studies as day student and works regularly
- 7 – studies as day student and works occasionally
- 8 – works while on child care leave
- 9 – lives on casual work (manual)
- 10 – lives on contract work (non-manual)
- 11 – helping family member

2 – no



31b. Why not?

- 1 – old-age pensioner, own right
- 2 – disability pensioner (work disability)
- 3 – widow(er)'s pensioner
- 4 – on child-care fee (GYED)
- 5 – on child-care allowance (GYES)
- 6 – on child-care support (GYET)
- 7 – on military service
- 8 – homemaker
- 9 – student
- 10 – first-time job-seeker
- 11 – unemployed
- 12 – other

AFTER ANSWERING GO TO 33!

QUESTION 32: ONLY IF SPOUSE/PARTNER WORKS (Q 31 code 1)

32. Does your spouse/cohabiting partner also do any other paid activity?

1 – yes

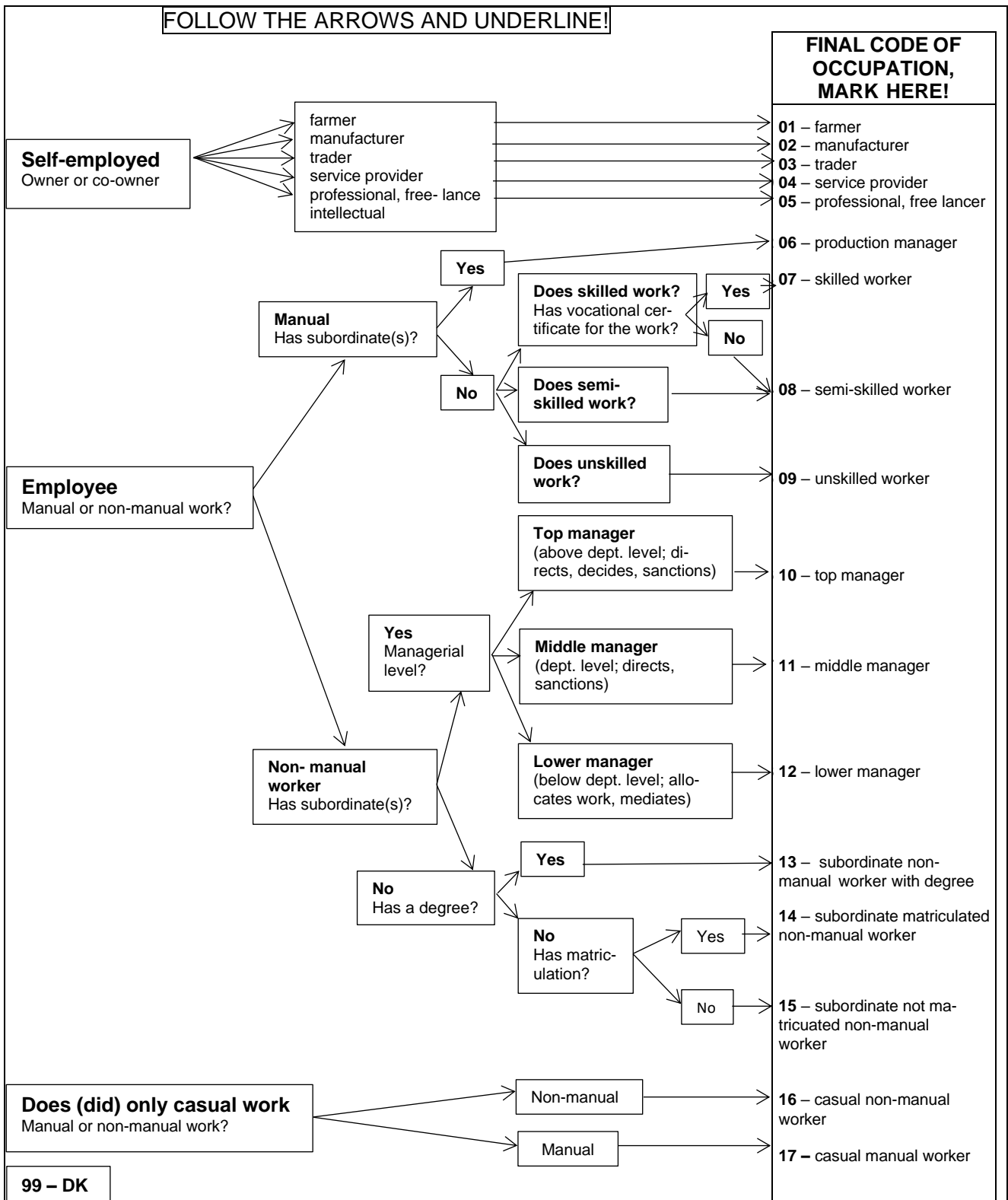
2 – no

33. What is (was) his/her (last) occupation?

IF PENSIONER OR ON CHILD-CARE LEAVE AND WORKS: LAST OCCUPATION BEFORE RETIREMENT, UNEMPLOYMENT OR LEAVE!

0000 – NEVER WORKED → GO TO 35!

33/a. Does (did) your spouse/cohabiting partner do this work as self-employed or as an employee?



IF SPOUSE/COHABITING PARTNER IS CURRENTLY WORKING:

34. How many hours did your spouse/cohabiting partner work last week? (Consider only paid activity.)

hours

99 – DK

39. Look at **CARD NO. 3**. Use it to indicate how true or typical the following statements are with regard to you.

	Completely	Partly	Rather not	Not at all	DK
	TRUE				
1 I have confidence in the future.	4	3	2	1	9
2 I have no influence over my everyday affairs.	4	3	2	1	9
3 Life is so complicated nowadays that most of the time I don't know what to do.	4	3	2	1	9
4 Anyone who wants to achieve something in life is forced to break certain rules.	4	3	2	1	9
5 I generally don't enjoy work.	4	3	2	1	9
6 No one cares what happens to other people.	4	3	2	1	9

40. Look at **CARD NO. 4** showing different national aims. Please choose the one most important to you. And which is second most important?

	First most important choice	Second most important choice
1 To maintain order in the country.	1	2
2 To give people more say in the country's affairs.	1	2
3 To combat rising prices.	1	2
4 To ensure freedom of speech.	1	2

9 – DK

IV I would like to ask you a few things about your childhood family

41. Is your biological mother alive?

- 1 – Yes
- 2 – No
- 3 – Does not know mother
- 9 – DK

—————▶ **41a. When did she die?** year
9999 – DK

42. Is your biological father alive?

- 1 – Yes
- 2 – No
- 3 – Does not know father
- 9 – DK

—————▶ **42a. When did he die?** year
9999 – DK

43. When you were born, were your parents

- 1 – married and living together,
- 2 – cohabiting, or
- 3 – not living together?

GO TO 46!

- 4 – did not know either parent
- 9 – DK

GO TO 49!

GO TO 48!

44.

IF ONE OR BOTH PARENTS HAVE DECEASED:

While both your parents were alive, did they live together to the last?

1 – yes —————▶ GO TO 48!

2 – no, they got divorced or broke up

IF BOTH PARENTS ARE ALIVE:

Do your parents still live together?

1 – yes —————▶ GO TO 48!

2 – no, they have got divorced or broken up

45. How old were you when your parents divorced or broke up?

years

99 – DK

46. Has your mother (re)married or formed a cohabiting relationship afterwards?

- 1 – has (re)married
- 2 – has formed a cohabiting relationship
- 3 – none, has stayed single
- 9 – DK

47. Has your father (re)married or formed a cohabiting relationship afterwards?

- 1 – has (re)married
- 2 – has formed a cohabiting relationship
- 3 – none, has stayed single
- 9 – DK

48. Including yourself, how many children has your mother had?

children

99 – DK

49. In total, how many children (biological, half- and step-siblings) have been raised together in your childhood family, including you?

children

99 – DK

V Now some questions on marriage and cohabitation

50. Looking at **CARD NO. 5**, how important you find the listed characteristics in the success of a marriage? 5 means that you think it is very important, 1 means that you think it is not at all important. Of course you may also use the grades in between!

How important are the following things for a good marriage?	not at all important					very	DK
	1	2	3	4	5		
1 – faithfulness	1	2	3	4	5		9
2 – adequate financial circumstances	1	2	3	4	5		9
3 – mutual respect	1	2	3	4	5		9
4 – a well-managed household	1	2	3	4	5		9
5 – happy sexual life	1	2	3	4	5		9
6 – the same taste and interests	1	2	3	4	5		9
7 – mutual affection, love	1	2	3	4	5		9
8 – ready to make sacrifices for each other	1	2	3	4	5		9
9 – no secrets between the partners	1	2	3	4	5		9
10 – both partners able to pursue their own, individual goals too	1	2	3	4	5		9
11 – a common child	1	2	3	4	5		9

IF YOU REMEMBER, DON'T ASK, JUST CODE.

51. Could you tell me again whether you live with a spouse or a cohabiting partner?

1 – Lives with spouse/partner

2 – Lives with neither spouse nor partner

GO TO 57

ASK ONLY MARRIED OR COHABITING RESPONDENTS!

52. Please mark from 1 to 5 again.

How characteristic are the following things of your marriage or partnership?	not at all characteristic					very	DK
	1	2	3	4	5		
1 – faithfulness	1	2	3	4	5		9
2 – adequate financial circumstances	1	2	3	4	5		9
3 – mutual respect	1	2	3	4	5		9
4 – well-managed household	1	2	3	4	5		9
5 – happy sexual life	1	2	3	4	5		9
6 – same taste and interests	1	2	3	4	5		9
7 – mutual affection, love	1	2	3	4	5		9
8 – ready to make sacrifices for each other	1	2	3	4	5		9
9 – no secrets between the partners	1	2	3	4	5		9
10 – both partners are able to pursue their own, individual goals too	1	2	3	4	5		9

53. Look at **CARD NO. 1**. Use it to indicate how satisfied you are with your marriage/partnership. Please evaluate the relationship from 0 to 10, where 0 means that you are not at all satisfied and 10 means that you are completely satisfied.

Scale value:
 99 – DK

54. Looking at **CARD NO. 6**, please tell me how often you and your spouse/partner argue over the following issues!

How often do you argue over...	Never	Sometimes	Quite often	Very often	Does not apply	DK
1 – the sharing of housework?	1	2	3	4		9
2 – financial matters?	1	2	3	4		9
3 – the use of leisure time?	1	2	3	4		9
4 – relations with friends? (if you have any)	1	2	3	4	7	9
5 – relations with parents? (if you have any)	1	2	3	4	7	9
6 – child-raising issues? (if you have any children)	1	2	3	4	7	9
7 – having children?	1	2	3	4		9
8 – common goals, plans?	1	2	3	4		9
9 – drinking alcohol?	1	2	3	4		9
10 – jealousy?	1	2	3			

55. Look at **CARD NO. 7**. Use it to indicate what characterises your behaviour the most when you have an argument with your spouse/partner.

- 1 – You keep your opinion to yourself to avoid a bigger dispute,
 - 2 – you discuss the disagreement calmly,
 - 3 – one of you sulks in silence,
 - 4 – you argue, shout at each other, or
 - 5 – you end up becoming violent?
- _____
- 6 – other, namely:.....
 - 7 – never have argument
 - 9 – DK

56. Over the past year, have you thought of divorce or breaking up the relationship?

- 1 – no,
 - 2 – yes, I have thought of it,
 - 3 – yes, we have both thought of it,
 - 4 – yes, we are seriously considering the possibility of divorce or breaking up,
 - 5 – we are already divorcing
- _____
- 9 – DK

ASK EVERYONE!

57. What would you advise young women and men? What life should they choose?

- 1 – Live alone, independently,
 - 2 – cohabit,
 - 3 – live together first and then marry, or
 - 4 – marry without previously living together?
- _____
- 9 – DK

58. In your view how important is it to get married if a woman becomes pregnant in a cohabitation and the parents would like to keep the child?

- 4 – Very important, _____
- 3 – quite important, _____
- 2 – not particularly, or
- 1 – not at all important for them to marry?

9 – DK

58a. And when should they marry?

- 1 – Definitely before the birth of the child, or
- 2 – it is enough to marry after the child is born.

59. In your opinion, what is the best age for getting married nowadays...
for a woman?

years
00 – never

What do you think:

- 77 – Rather before the age of 25, or
- 88 – rather over 25?

99 – DK

and for a man?

years
00 – never

What do you think:

- 77 – Rather before the age of 25, or
- 88 – rather over 25?

99 – DK

IF UNABLE TO SPECIFY AN AGE, ASK.

60. And nowadays what is the best age to have the first child...

for a woman?

years
00 – never

But, what do you think:

- 77 – Rather before the age of 25, or
- 88 – rather over 25?

99 – DK

and for a man?

years
00 – never

But, what do you think:

- 77 – Rather before the age of 25, or
- 88 – rather over 25?

99 – DK

IF UNABLE TO SPECIFY AN AGE, ASK.

61. In your view

marriage or cohabitation is better for...	Rather		No difference, it does not depend on the legal form	DK
	marriage	cohabitation		
1 – financial security?	1	2	3	9
2 – having children, providing for their future?	1	2	3	9
3 – the durability of the relationship?	1	2	3	9
4 – settling the disagreements, conflicts between partners?	1	2	3	9
5 – for the partners to pursue their individual goals too?	1	2	3	9
6 – sympathy and support from parents and relatives?	1	2	3	9

QUESTION 62: ONLY FROM RESPONDENTS AGED OVER 45 (SEE Q 1: THOSE BORN BEFORE 1956.)

62. If you could start your life over again, how many children would you have?

children

DOES NOT GIVE A FIGURE BUT IT TURNS OUT THAT:

- 55 – as many as he/she has now
- 66 – fewer than he/she has not
- 77 – more than he/she has now

- 88 – other response
- 99 – DK

VI A few questions about how you live and how you feel

ASK EVERYONE!

63. Look at **CARD NO.8.** Use it to indicate the things you do and achieve and those which you do not, either because you cannot afford them, do not need or want them or for some other reason.

Do you do the following things?	Yes	Would like to but cannot afford	IF NOT:	
			Does not do it because does not need it	of other reason
1 – Going on holiday for a week once a year.	1	2	3	4
2 – Subscribing to a newspaper or buying it regularly.	1	2	3	4
3 – Regularly buying new clothes.	1	2	3	4
4 – Replacing worn-out furniture.	1	2	3	4
5 – Eating a hot meal daily.	1	2	3	4
6 – Inviting friends for supper once a month.	1	2	3	4
7 – Having lunch with your family in a restaurant once a month.	1	2	3	4
8 – Saving at least 5,000 HUF a month.	1	2	3	4
9 – Being physically active, doing sports at least once a week.	1	2	3	4
10 – Finding enough time for yourself, your hobby.	1	2	3	4
11 – Going to the theatre, concerts or a museum once or twice a month.	1	2	3	4
12 – Reading books and literature at least once a week.	1	2	3	4
13 – Doing some kind of work that gives pleasure almost every day.	1	2	3	4

64. Look at **CARD NO. 1** and indicate to what extent you are satisfied with your standard of living. 0 means not satisfied at all, while 10 means that you are completely satisfied.

Scale value:

99 – DK

65. How much do you worry about the following things?

Do you worry a lot, a little or not at all about...	A lot	A little W O R R Y	Not at all	Does not apply	DK
1 – your state of health?	3	2	1		9
2 – IF YOU HAVE ONE: losing your job?	3	2	1	7	9
3 – IF YOU HAVE ANY: your children's future?	3	2	1	7	9
4 – IF YOU HAVE ONE: your family's financial situation?	3	2	1	7	9
5 – IF YOU HAVE ONE: your partnership?	3	2	1	7	9
6 – the country's economic situation?	3	2	1		9
7 – the growing number of foreigners living in the country?	3	2	1		9
8 – the deterioration of law and order?	3	2	1		9
9 – war, nuclear catastrophe?	3	2	1		9
10 – the deterioration of the environment?	3	2	1		9

VII The next questions are about family policies, family planning and child-raising

66. In your opinion what is the ideal number of children for a Hungarian family today?

children

00 – none

88 – does not give a figure (e.g. “however it turns out”, “as many as the Lord gives”, etc.)

99 – DK

67. I will read a few opinions on family life and child-raising. Please tell me for each of them whether you agree or disagree.

	Agree	Disagree	Respondent is uncertain	DK
1 – It is right if work is more important for the husband and the home and children for the wife, even if they both work.	3	1	2	9
2 – A child should obey its parents in all things and respect them even if they do not deserve it.	3	1	2	9
3 – Women with a good profession, a good job are right to consider work more important than having more children.	3	1	2	9
4 – Parents do have obligations but they don't have to give up on their goals in life because of the children.	3	1	2	9

68. In your opinion, to what extent should the state be responsible for...

	The state should be responsible			DK
	completely	partly	not at all	
1 – preventing a further decline in the number of births?	3	2	1	9
2 – everyone having as many children as they want?	3	2	1	9
3 – ensuring that a young couple can set up an independent home?	3	2	1	9
4 – making it easier to combine work and child-raising?	3	2	1	9
5 – making young people well prepared for family life?	3	2	1	9
6 – ensuring that parents have the financial means to support children?	3	2	1	9

**QUESTIONS 69–78: WOMEN AGED 45 AND YOUNGER AND MEN AGED 50 AND YOUNGER.
SEE QUESTION 1 (women born in 1956 or later and men born in 1951 or later)!
IF OLDER → GO TO 80!**

69. Would like to have (additional) children?

1 – yes

GO TO 73!

2 – yes, expecting a baby right now

3 – no, does not want to

4 – cannot have more children

GO TO 78!

9 – DK

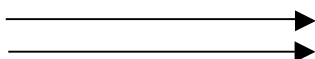
70. Please choose among the following reasons why you would not like to have a(nother) child.

MULTIPLE ANSWERS ARE ALLOWED

	Chosen	Not chosen
1 – I already have as many children as I wanted.	1	2
2 – We cannot afford it.	1	2
3 – Our housing conditions are not satisfactory.	1	2
4 – I want to retain my freedom and comfort.	1	2
5 – Pregnancy and child delivery is a great stress.	1	2
6 – I am afraid of the physical, nervous strain of raising children.	1	2
7 – It would hinder my professional career.	1	2
8 – It would be more difficult to find a job with a child.	1	2
9 – Due to my (my partner's) health.	1	2
10 – My marriage or my partnership is not stable enough.	1	2
11 – I can't count on help from my family.	1	2
12 – Out of question because of my age, my partner's age.	1	2
13 – The future is insecure.	1	2
14 – The influence of parents and relatives.	1	2
15 – My spouse/partner does not want/ opposes having (more) children.	1	2

71. Can you imagine a circumstance or change in your life that would make you decide (after all) to have a(nother) child?

- _____
- 1 – yes
2 – perhaps
3 – no
9 – DK



GO TO 78

72. What would that be?

- 1 – there is an answer
9 – DK

AFTER ANSWERING GO TO 78!

73. How many (more) children would you like to have?

children

- 88 – does not give a figure (e.g. “however it turns out”, “as many as the Lord gives”, etc.)
99 – DK

74. Do you think your spouse/ cohabiting partner would like the same number of children with you?

- _____
- 1 – the same number
2 – more
3 – fewer
4 – does not want children at all
5 – does not want a child yet
6 – we haven't talked about it
7 – no spouse or cohabiting partner
9 – DK

75. At what age would you like to have your (next) child?

years
 88 – does not give a figure
 99 – DK

GO TO 78

ASK QUESTION 76 ONLY IF THE ANSWER HAS NOT TURNED OUT YET!

76. Why do you have this age in mind?

ENTER, THEN CODE BELOW! ONE ANSWER ONLY!

- | | |
|---|---|
| 01 – completing school, gaining a profession first | 07 – would like several children so it is better to start early |
| 02 – creating the financial background (e.g. having an apartment) first | 08 – a person becomes really adult when he/she has a child |
| 03 – obtaining a steady job first | 09 – other reason |
| 04 – to have time for independent life, entertainment | |
| 05 – to have an emotionally more stable relationship with partner | 99 – DK |
| 06 – this is the best for mother and child | |

77. Is this child going to be your first child?

- 1 – Yes, the first one
 2 – No, I already have child(ren)

ASK QUESTIONS 78–79 FROM EVERYONE IN THE AGE GROUP CONCERNED (WOMEN UP TO 45, MEN UP TO 50).

78. Parents raising children are entitled to a variety of family benefits. Which of the following do you consider the most important?

- 1 – child-care allowance (GYES)
 2 – child-care fee (GYED)
 3 – family allowance (schooling support)
 4 – tax relief for families with children
 5 – housing loan
 6 – the possibility for a grandparent to take child-care allowance
 7 – other opinion:.....
 9 – DK

ONE ANSWER ONLY!

79. What role do the following family benefits play in ...

	Signifi- cant role	Perhaps a partial role	No role at all	DK
1 – the realization of your plans and having as many children as you would like?	3	2	1	9
2 – having a(nother) child sooner?	3	2	1	9
3 – having more children than you originally intended?	3	2	1	9

ASK EVERYONE!

80. Look at CARD NO. 8. It lists things for which children can be educated. Select the FIVE you consider especially important.

- | | |
|--------------------|--|
| 01 – obedience | 08 – consistency |
| 02 – independence | 09 – national feeling |
| 03 – humanism | 10 – unselfishness |
| 04 – good manners | 11 – diligence, persistence |
| 05 – hard work | 12 – thrift |
| 06 – imagination | 13 – patience, understanding for other |
| 07 – sense of duty | 14 – religious conviction |
| 99 – DK | |

81. In your opinion, from what age can a person be regarded as old?

years

99 – DK

82. Look at CARD NO. 10. Select the THREE things you consider best characterise old age.

An old person is someone who:

- 1 – is over 65 years old,
- 2 – has deteriorated health,
- 3 – cannot look after him-/herself, needs the help of others,
- 4 – whose mental state has deteriorated,
- 5 – is old-age pensioner,
- 6 – has difficulty adapting to changes,
- 7 – cannot solve problems,
- 8 – has grandchildren.

9 – DK

83. Please tell me whether you agree or disagree with the following statements.

	Agree	Disagree	Respondent is uncertain	DK
1 – Old people's work is more valuable than that of young people because they have more experience.	3	1	2	9
2 – Old people are suspicious, they see everyone as an enemy.	3	1	2	9
3 – The feeling of being superfluous hurts old people more than financial problems.	3	1	2	9
4 – It greatly benefits family life if the grandparents share everyday joys and problems.	3	1	2	9
5 – Old people do not receive as much respect from people as they deserve.	3	1	2	9
6 – It is definitely the duty of adult children to support their elderly parents.	3	1	2	9
7 – Even if they could, old people do not want to participate in solving young people's problems.	3	1	2	9
8 – Old people too have the right to fall in love.	3	1	2	9
9 – Old people do not need as much financial support as they claim.	3	1	2	9
10 – Ageing people have no respect at workplaces.	3	1	2	9
11 – Old people like interfering in young people's family life.	3	1	2	9
12 – Old people are not satisfied with anything, they are always grumbling.	3	1	2	9
13 – Old people willingly sacrifice everything for their children.	3	1	2	9

84. Regardless of your age, are you preparing or have you prepared to supplement your pension in some way? What have you done so far and which of the following things are you planning to do?

	Have already started or done	Planning	Not dealing/ have not dealt with	DK
1 – Saving money	1	2	3	9
2 – Having a paid job while on pension	1	2	3	9
3 – Changing housing conditions (e.g. smaller, cheaper apartment, moving in with children, renting out a room, etc.)	1	2	3	9
4 – Signing a contract for annuity and support, buying pension insurance	1	2	3	9
5 – Joining a voluntary pension fund, a health fund	1	2	3	9
6 – Something else	1	2	3	9

VIII The following questions are for the middle-aged and how they are planning to retire

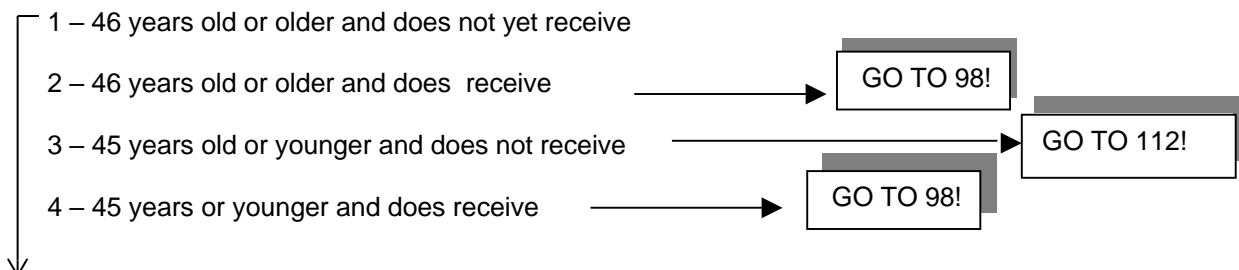
IF YOU REMEMBER, DON'T ASK, JUST ENTER!

85. Could you tell me again how old you are?

years

86. Do you receive some kind of pension?

ATTENTION! IF HE/SHE RECEIVES ONLY WIDOW(ER)'S OR ORPHAN TEMPORARY PENSION, HE/SHE IS NOT UNDERSTOOD AS A PENSIONER!



87. At what age do you expect to retire?

years

IF DOES NOT GIVE A SPECIFIC AGE, BUT:

01 – when reaches the legal retirement age

02 – as late as possible, will wait till sent

03 – does not work (will not be entitled to pension) → **GO TO 112!**

99 – DK

88. And if it depended on you, at what age would you retire?

years

DOES NOT GIVE A SPECIFIC AGE, BUT:

01 – as soon as possible, or sooner than just indicated

02 – as late as possible, or later than just indicated → **GO TO 90!**

03 – the same as just indicated

04 – while still healthy enough → **GO TO 91!**

05 – other

99 – DK

IF WOULD LIKE TO RETIRE SOONER:

89. Why would you like to retire sooner?

WRITE DOWN, THEN CODE BELOW THE LINE!

MULTIPLE ANSWERS ARE ALLOWED!

01 – tired

02 – health deteriorated

03 – would like to spend more time with family

04 – would like to earn while on pension

05 – does not like workplace, job

06 – would like to do a different kind of work (e.g. own business, farming)

07 – would be free of the threat of becoming unemployed

08 – would like more free time, tired of restrictions

09 – can afford not to have a job

10 – other

99 – DK

AFTER ANSWERING GO TO 91

IF WOULD LIKE TO RETIRE LATER:

90. Why would you like to postpone retirement?

WRITE DOWN, THEN CODE BELOW THE LINE!

MULTIPLE ANSWERS ARE ALLOWED!

- 1 – for financial reasons (need the earnings)
- 2 – likes the job, workplace, occupation, would like to work for as long as possible
- 3 – will not be too old to work
- 4 – would be bored as a pensioner: would not be satisfied by home life, the family and household
- 5 – would feel lonely, superfluous as a pensioner, life would be without purpose
- 6 – you are only valued as long as you work and have a job
- 7 – other
- 9 – DK

ASK FROM EVERYONE AGED 46 OR OLDER WHO ARE NOT PENSIONERS:

91. Where will you get your pension from?

MULTIPLE ANSWERS ARE ALLOWED!

- 1 – from the state pension insurance (TB),
- 2 – from a new private pension fund (as well),
- 3 – from a mutual pension insurance fund,
- 4 – from an annuity (e.g. life insurance), or
- 5 -- from other sources (e.g. local council)?

9 – DK

92. Regarding the way you will spend the first 5–10 years of your retirement, do you

- 1 – have concrete plans, or
- 2 – only very general, vague ideas, or
- 3 – (as yet) have not given any thought to the question?

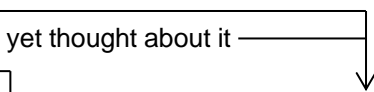
9 – DK

93. While on pension, are you planning to ...

	Yes, am planning	Perhaps	Not planning	DK
1 – take full-time or part-time work as an employee?	1	2	3	9
2 – begin a business of some kind?	1	2	3	9
3 – do work with informal hours (e.g. work from home, casual, seasonal, contract work)?	1	2	3	9
4 – do agricultural work to supplement your income?	1	2	3	9
5 – play a considerable part in caring for and supervising children, grandchildren?	1	2	3	9

94. Are there things you would like to do after your retirement which you could not pursue while being younger?

- 1 – yes, there are
- 2 – no, there aren't
- 3 – has only vague ideas, depends on how things turn out, has not yet thought about it
- 9 – DK



GO TO 96

95. Can you tell me what those things are?

--

1 – there is an answer

9 – DK

96. When you think of the future and your old age, do you worry about the following things?

How concerned are you....?	Not at all	A little concerned	Very	Not applicable	DK
1 – about the lack of something to do, feeling superfluous?	1	2	3		9
2 – that you will become a widow(er), remain alone?	1	2	3		9
3 – about financial matters?	1	2	3		9
4 – that your mental status will decline?	1	2	3		9
5 – about your own state of health?	1	2	3		9
6 – IF YOU HAVE ANY: about the health of your family members?	1	2	3	7	9
7 – IF YOU HAVE ANY: about your child(ren)'s life, living conditions, security?	1	2	3	7	9
8 – IF YOU HAVE ANY: that your relations with your children, grandchildren will weaken?	1	2	3	7	9
9 – IF YOU HAVE ANY: that there will be problems in your marriage, partnership?	1	2	3	7	9

97. All things considered,

1 – are you expecting a pleasant, calm, enjoyable old age, or

2 – a period full of problems and difficulties?

3 – other: yes and no, it depends on how things turn out

9 – DK

AFTER ANSWERING LEAVE OUT THE NEXT GROUP OF QUESTIONS

▶ GO TO 112

IX The next questions are for pensioners and how they spend their retirement years**98-111: ASK ONLY PENSIONERS!****ATTENTION! IF THE RESPONDENT RECEIVES ONLY WIDOW(ER)'S OR ORPHAN'S TEMPORARY PENSION, HE/SHE IS NOT UNDERSTOOD AS A PENSIONER!****98. How old were you when you retired?** years

98 – when you reached the retirement age applicable at that time
99 – DK

99. Did that retirement age...

- 1 – suit your ideas, or
2 – would you have liked to retire earlier, or
3 – would you have liked to remain active longer?

9 – DK

100. Before retirement...

- 1 – did you have a job,
2 – were you unemployed, or
3 – did you not work?

9 – DK

101. Before retirement for how many years altogether had you been employed? years

9 – DK

102. The timing of your retirement was

- 1 – basically your own decision,
2 – basically decided by the workplace, or
3 – a joint decision?

9 – DK

103. Was the decision

- 1 – influenced by the desire to avoid unemployment, or
2 – this was not a factor?

9 – DK

104. At the time of your retirement what type of benefit did you receive:

- 1 – old-age pension in your own right,
2 – early retirement, pre-retirement pension in your own right,
3 – disability pension,
4 – only widow(er)'s pension because it was higher than your own pension, or
5 – only widow(er)'s pension because you were not entitled in your own right?

7 – NONE OF THESE: received a different kind of pension or pension-type benefit
9 – DK

105. What type of benefit do you receive now:

- 1 – old-age pension in your own right,
 2 – early retirement, pre-retirement pension in your own right,
 3 – disability pension,
 4 – only widow(er)'s pension, because it is higher than your own pension, or
 5 – only widow(er)'s pension, because you are not entitled in your own right?

 7 – NONE OF THESE: received a different kind of pension or pension-type benefit
 9 – DK

106: ASK ONLY DISABILITY PENSIONERS!**106. How have you become disabled?**

- 1 – due to a congenital health problem
 2 – due to gradual impairment of health
 3 – due to illness
 4 – as the result of an accident

 9 – DK

ASK ALL PENSIONERS!**107. Where do you receive your pension from?**

- 1 – from the state pension insurance (TB)
 2 – from a new private pension fund (as well)
 3 – from a voluntary pension insurance fund
 4 – from an annuity (e.g. life insurance)
 5 – from some other place (e.g. local government)

 9 – DK

MULTIPLE ANSWERS ARE ALLOWED.**108. Do you currently work for pay?**

- 1 – yes, works continuously, employed or on contract
 2 – yes, works occasionally, not regularly
 3 – not engaged in income-earning work

 9 – DK

109. I am going to list a few kinds of activities. Please indicate which of these are your everyday "tasks", something you do regularly, practically every day, and which are not.

	A task	Not a task	Not applicable
1 – household work (cooking, washing, housework, shopping)	1	2	7
2 – agricultural work, gardening, animal husbandry	1	2	7
3 – care of pets (e.g. dog, cat, fish, etc.)	1	2	7
4 – work around the house, repairs, maintenance	1	2	7
5 – care, supervision of children, grandchildren	1	2	7
6 – work for the household or farm of the children, grandchildren	1	2	7
7 – nursing a sick person, caring for someone	1	2	7
8 – public activity, voluntary work (in a civil organization, church, party, local government, etc.)	1	2	7

9 – DK

110. Thinking about the future and your old age, are you worried about the following things?

How concerned are you....?	Not at all	A little	Very	DK	Not applicable
	concerned				
1 – about the lack of something to do, feeling superfluous?	1	2	3	9	
2 – about financial matters?	1	2	3	9	
3 – that your mental status will decline?	1	2	3	9	
4 – about your own state of health?	1	2	3	9	
5 – that you will become a widow(er), remain alone?	1	2	3	9	
6 – IF YOU HAVE ANY: about the health of your family members?	1	2	3	9	7
7 – IF YOU HAVE ANY: about your child(ren)'s life, living conditions, security?	1	2	3	9	7
8 – IF YOU HAVE ANY: that your relations with your children, grandchildren will weaken?	1	2	3	9	7
9 – IF YOU HAVE ANY: that there will be problems in your marriage, partnership?	1	2	3	9	7

111. All things considered, how would you characterise your present situation and life? Is this

- 1 – rather a pleasant, balanced, enjoyable period of your life, or
 2 – a period full of problems and difficulties?

-
- 3 – other, both are true
 9 – DK

X The next topic is help from family and friends**ASK EVERYONE!**

The following questions relate to PERSONS NOT LIVING IN YOUR HOUSEHOLD.

112. During the past year have you received regular assistance from a PERSON NOT LIVING IN YOUR HOUSEHOLD (parents, children, other relatives, non-relatives)?

Have you received during the past year...			IF YES: from whom:			
	yes	no	parent	child	other relative	other person
1 – regular assistance in the form of money?	1	2	1	2	3	4
2 – occasional assistance in the form of small sums of money?	1	2	1	2	3	4
3 – a large sum on one occasion?	1	2	1	2	3	4

113.

Have you recently received regular help with...			IF YES: from whom:			
	yes	no	parent	child	other relative	other person
1 – household work (e.g. cleaning, ironing)?	1	2	1	2	3	4
2 – caring for children?	1	2	1	2	3	4
3 – caring for a sick person?	1	2	1	2	3	4
4 – shopping?	1	2	1	2	3	4
5 – construction work?	1	2	1	2	3	4
6 – repairs?	1	2	1	2	3	4
7 – handling official matters?	1	2	1	2	3	4

114.

Have you regularly received			IF YES: from whom:			
	yes	no	parent	child	other relative	other person
1 – food?	1	2	1	2	3	4
2 – cleaning products, clothing, other things?	1	2	1	2	3	4

115. During the past year have you given regular support to a PERSON NOT LIVING IN YOUR HOUSEHOLD (parents, children, other relatives, non-relatives)?

During the past year have you given...			IF YES: to whom:			
			parent	child	other relative	other person
1 – regular support in the form of money?	1	2	1	2	3	4
2 – assistance in the form of small sums of money?	1	2	1	2	3	4
3 – a large sum on one occasion?	1	2	1	2	3	4

116.

Have you recently given regular help with...			IF YES: to whom:			
			parent	child	other relative	other person
1 – household work (e.g. cleaning, ironing)?	1	2	1	2	3	4
2 – caring for children?	1	2	1	2	3	4
3 – caring for a sick person?	1	2	1	2	3	4
4 – shopping?	1	2	1	2	3	4
5 – construction work?	1	2	1	2	3	4
6 – repairs?	1	2	1	2	3	4
7 – handling official matters?	1	2	1	2	3	4

117.

Have you regularly given...			IF YES: who to:			
			parent	child	other relative	other person
1 – food (e.g. vegetables, meat)?	1	2	1	2	3	4
2 – cleaning products, clothing, other things?	1	2	1	2	3	4

121. Including your own income, what is the average monthly (net) income of your household?

				thousand HUF/month
--	--	--	--	--------------------

GO TO 123

8888 – DOES NOT WISH TO ANSWER
9999 – DK

IF DOES NOT KNOW / DOES NOT WISH TO ANSWER:

122. We process the data of this questionnaire without names, using statistical methods. Can you tell me in which of the categories on **CARD NO. 13** you belong?

- | | | |
|---------------------------|---------------------------|---------------------------|
| 01. 30,000 HUF or less | 07. 251,000 – 300,000 HUF | 12. 701,000 – 800,000 HUF |
| 02. 31,000 – 50,000 HUF | 08. 301,000 – 400,000 HUF | 13. 801,000 – 900,000 HUF |
| 03. 51,000 – 100,000 HUF | 09. 401,000 – 500,000 HUF | 14. 901,000 and above |
| 04. 101,000 – 150,000 HUF | 10. 501,000 – 600,000 HUF | |
| 05. 151,000 – 200,000 HUF | 11. 601,000 – 700,000 HUF | 88 – REFUSES TO ANSWER |
| 06. 201,000 – 250,000 HUF | | 99 – DK |

ASK EVERYONE:

123. What would you say, how do you manage with this income?

- 1 – have to go without,
2 – financial problems from month to month,
3 – can just make ends meet by budgeting carefully,
4 – live acceptably, or
5 – live without problems?

9 – DK

124. What is your status in this apartment?

IF PRIVATE OWNER(S)	1 – owner 3 – cohabiting partner of owner	2 – spouse of owner 4 – other family member of owner
IF TENANT(S) OF LOCAL GOVERNMENT APARTMENT	5 – tenant 7 – cohabiting partner of tenant	6 – spouse of tenant 8 – other family member of tenant
IF PROVIDED BY THE EMPLOYER	9 – service apartment, own right 11 – service apartment of cohabiting partner	10 – service apartment of spouse 12 – service apartment of other family member
IF RENTED FROM A PRIVATE PERSON OR COMPANY	13 – renter of whole apartment 15 – subtenant(s) (renting a room, part of an apartment)	14 – co-tenant (several households rent a whole apartment) 16 – renter of only a place (bed) to sleep
IF OTHER	17 – maintenance contract 19 – institutional household (e.g. hostel)	18 – free use of apartment 20 – other
99 – DK		

GO TO 131

125. What is the living floor space of the apartment?

			m ²
--	--	--	----------------

999 – DK

126. Number of rooms larger than 12 m²:

		rooms
--	--	-------

99 – DK

Number of rooms with an area of 4–12 m²:

		rooms
--	--	-------

99 – DK

127. What kind of heating do you use?

- 1 – district heating, thermal water
- 2 – boiler heating several apartments in the same building
- 3 – central boiler heating one apartment
- 4 – modern heating in each room (gas, electricity)
- 5 – traditional heating in each room (coal, oil)
- 6 – no heating

128. Look at CARD NO. 1. Use it to indicate how satisfied you are with your apartment or house. 0 means that you are not satisfied at all and 10 that you are fully satisfied.

Scale value:

99 – DK

129. Look at CARD NO. 14. Use it to indicate which of the following things you have and which you do not have. If you do not have an item, indicate whether you would like to have it but cannot afford it or you do not need it.

	Have	Does not have because		
		would like but cannot afford	does not need	other reason
1 – An apartment in which everyone has a separate room	1	2	3	4
2 – WC and bathroom or shower in the apartment	1	2	3	4
3 – Garden, terrace or balcony overlooking pleasant environment	1	2	3	4
4 – Telephone	1	2	3	4
5 – Car	1	2	3	4
6 – Colour TV	1	2	3	4
7 – Automatic washing machine	1	2	3	4
8 – Dishwasher	1	2	3	4
9 – Video recorder	1	2	3	4
10 – Home computer	1	2	3	4

130. Are you planning to change your housing conditions in the near future?

- 1 – yes, within one or two years
- 2 – yes, within 3–5 years
- 3 – not yet, but would like to later
- 4 – does not want to move or change
- 9 – DK

130a. How do you want to make the change?

- 1 – by moving
- 2 – by construction within the present home
- 9 – DK

131. When did you leave the parental home?

year →

- 7777 – still lives there
- 8888 – has not grown up in a private household (in state care, etc.)
- 9999 – DK

GO TO 135

131a. Afterwards have you moved back to your parents' home for a longer period, at least six months?

- 1 – yes
- 2 – no

132. When did you first had a separate apartment (either your own or a rented one)?

year

08 – does not have own apartment

09 – DK

GO TO 135

133. How did you obtain your first separate apartment?

- 1 – bought it
 2 – built it
 3 – by expanding an existing home (annex, built-in attic)
 4 – service apartment
 5 – spouse/cohabiting partner had his/her own apartment, through marriage
 6 – parents gave their apartment
 7 – inherited grandparents' apartment (or their right to rent)
 8 – other inheritance
 9 – social care contract
 10 – allocation
 11 – moved into separate apartments, exchanged
 12 – rented from a private person, a company
 13 – other way
 99 – DK

134. Did your parents help when you obtained your first separate apartment? If so: to what extent?

	Did not help	Helped			It was not needed
		a little	a lot	with everything	
1 – With money	1	2	3	4	7
2 – With furniture, fittings	1	2	3	4	7
3 – With work	1	2	3	4	7
4 – With their network connections	1	2	3	4	7

ASK EVERYONE!

135. When you are elderly and have difficulty in caring for yourself alone, what would you like:

- 1 – move to a home where you can receive proper care, or
 2 – find a solution to continue living in your own home, or
 3 – move to the home of a family member, move in with somebody?

4 – other

9 – DK

136. Look at **CARD NO. 15**. Evaluate the change of your own living conditions since 1990. Which graph best characterises the trend of these 10 years?

Number of figure selected:

9 – DK

137. Now evaluate your general living conditions again. Look at **CARD NO. 1**: 10 represents the best living conditions you can imagine and 0 the worst.

	Scale value	DK
1 – How would you rate your present living conditions?		99
2 – And what living conditions would you consider fair for yourself?		99
3 – And what do you expect your living conditions will be in five years' time?		99

XII The last questions concern your state of health and sense of well-being

ASK EVERYONE. _____

138. Are you limited in your everyday activities by some kind of health problem, illness, disability?

1 – yes _____

2 – no _____

9 – DK _____

138a. How much does this problem limit you?

1 – severely, or

2 – moderately? _____

3 – varying, it depends

9 – DK

139. Do you regularly take medicine prescribed by a doctor?

1 – yes

2 – no _____

9 – DK

140. Use **CARD NO. 1** to indicate how satisfied you are with the state of your health.

0 means that you are not at all satisfied and 10 that you are fully satisfied.

Scale value:

99 – DK

141. People's general well-being can be influenced by many things. Use **CARD NO. 3** and indicate to what extent they apply to you.

	Fully	Partly	Rather not	Not at all	DK
1 – There is always someone around I can discuss my everyday problems with.	4	3	2	1	9
2 – I can always rely on someone in case of need.	4	3	2	1	9
3 – I often feel that no one is interested in what I say.	4	3	2	1	9
4 – I feel that intimacy and warmth are missing from my life.	4	3	2	1	9
5 – I often feel lonely.	4	3	2	1	9

142. Which of these statements do you agree with more?

1 – Most people can be trusted, or

2 – you can't be too careful in dealing with people?

3 – other answer _____

9 – DK

143. Look at **CARD NO. 1**. Use it to indicate how satisfied you are with the following things. 0 means that you are not at all satisfied and 10 that you are fully satisfied.

How satisfied are you with...	Scale value	DK
1 – the course of your life so far?		99
2 – your future prospects?		99

THANK YOU FOR YOUR CO-OPERATION AND YOUR VALUABLE CONTRIBUTION!